

**Förstudie Stöd för rätt sjukskrivning**

**Biblioteksbilaga till**

**Litteraturöversikt, vetenskaplig litteratur**

**Resurstöd**

Carola Tilgmann, forskningskommunikatör,  
Lunds universitet, Medicinska fakultetens bibliotek & IKT  
Matthias Bank, bibliotekarie, Lunds universitet,  
Medicinska fakultetens bibliotek & IKT  
Göran Hollenby, Enheten för HTA, Region Skåne  
Kjell Larsson, Enheten för HTA, Region Skåne

## Innehållsförteckning

Litteratursökningarna och urvalsprocessen .....	3
Appendix 1.....	7
Inkluderade studier – 53 st.....	7
Appendix 2.....	13
Urvalsprocess .....	13
Appendix 3.....	18
Exkluderade artiklar .....	18
Appendix 4.....	23
Sökstrategier.....	23

# Litteratursökningarna och urvalsprocessen

## 1. Litteratursökningar inom sjukdomsområden

I juni 2014 genomfördes 24 systematiska litteratursökningar i följande åtta databaser: PubMed, Embase, PsycInfo, AMED, CINAHL Plus, Web of Science, Scopus och Cochrane Library.

Litteratursökningarna var relaterade till en "diagnosstratifiering" som bestämdes gemensamt med projektgruppen under våren 2014 och avgränsades till sjukdomsområdena cancer, psykisk ohälsa/mental disorders och MSD (musculoskeletal disorders)/rörelseorganens sjukdomar. Det gjordes även sökningar på "general aspects" som ingår i sjukdomsområdena. Sökstrategierna är redovisade i appendix 4.

Två bibliotekarier/informatiker utförde litteratursökningarna och sammanlagt identifierades 6.353 artiklar efter borttagning av dubletter. Utifrån PICO:t gjordes ett första urval av artiklar där 787 artiklar skickades till projektgruppen som från dessa valde att läsa 62 st. i fulltext. Efter projektgruppens läsning av dessa återstod 50 artiklar som ingår i analysen enligt denna fördelning inom sjukdomsområdena:

A. Cancer:	12 st.
B. Psykisk ohälsa/mental disorders:	13 st.
C. MSD (musculoskeletal disorders):	19 st.
D. MSD, pain-studier (från mental disorders):	6 st.

---

## 2. Litteratursökningar inom "prognosfaktorer"

Litteratursökningar gjordes i de tre databaserna PubMed, Embase och PsycInfo mellan den 14 till 17 augusti 2014 med utgångspunkt från fyra punkter/frågeställningar hämtade i ett mejl från Anne Snis den 25 juni samma år från delprojektet "Konceptutredning":

1. Vilka prognosfaktorer talar för (eller emot) en längre sjukskrivning/förtidspension hos personer som sjukskrivs?
2. Vilka prognosfaktorer talar för (eller emot) en längre sjukskrivning/förtidspension hos personer som är längre in i sjukskrivningsperioden?
3. Vilka prognosfaktorer talar för (eller emot) att sjukskrivna arbetstagare kan återgå tidigare till arbetet?
4. Vilka faktorer talar för att en patient inte åter behöver (eller inte behöver) sjukskrivning för en tidigare diagnos som patientens sjukskrivits för? [SEKUNDÄRPREVENTIVA FAKTORER]

**Av materialet i dessa sökningar har projektgruppen till denna förstudie läst "systematic reviews & meta-analysis". Eftersom detta material ingår i varje del av sökningarna redovisas resultatet av samtliga sökningar nedan.**

Till skillnad från litteratursökningarna inom "sjukdomsområdena" gjorde bibliotekarierna /informatikerna inget urval av materialet annat än genom maskinell dubblettsortering i databaserna och referenshanteringssystemet Zotero.

Fråga 1 och 2 (datum för litteratursökningen: 2014-08-15)

### **Prognosfaktorer för long term sick leave, längre sjukskrivning/förtidspension hos sjukskrivna**

1. Systematic reviews och meta analyser: 30 ref.
2. RCT: 57 ref.
3. Prospektiva och retrospektiva studier: 371 ref.  
(deduplicerat mot nr. 1 och 2 ovan)
4. Kontrollerade studier (deduplicerat mot nr. 1-3): 4 ref.

Fråga 3 (datum för litteratursökningen: 2014-08-14)

**Prognosfaktorer för return to work (RTW), återgång till arbete**

- |  |          |
|--|----------|
| 1. Systematic reviews och meta analyser:             | 40 ref.  |
| 2. RCT:  | 83 ref.  |
| 3. Prospektiva och retrospektiva studier:            | 278 ref. |
| 4. Kontrollerade studier (deduplicerat mot nr. 1-3): | 3 ref.   |

Fråga 4 (datum för litteratursökningen: 2014-08-17)

**Prognosfaktorer för recurrent sick leave, relapse/recurrence, återkommande sjukskrivning**

- |   |         |
|---|---------|
| 1. Systematic reviews och meta analyser:  | 17 ref. |
| 2. RCT:                                   | 27 ref. |
| 3. Prospektiva och retrospektiva studier: | 89 ref. |
- (deduplicerat mot nr. 1 och 2 ovan)
- |  |        |
|--|--------|
| 4. Kontrollerade studier (deduplicerat mot nr. 1-3): | 2 ref. |
|--|--------|

Sökningarna i fråga 4 deduplicerades mot fråga 3 (RTW).

**Prognosfaktorer – sammanslagning av artikelreferenser till listor**

Sökningarna på "prognosfaktorerna" – med utgångspunkt från de fyra punkterna/frågorna – slogs samman och sorterades i Zotero till tre referenslistor som skickades till projektgruppens medlemmar för läsning och analys:

- |  |          |
|--|----------|
| 1. Systematic reviews and meta-analysis: | 62 ref.  |
| 2. RCT:s och kontrollerade studier:      | 109 ref. |
| 3. Retrospektiva/prospektiva studier:    | 676 ref. |

**Resultat av de lästa artiklarna: 62 ref. i "systematic reviews & meta-analysis" – ingår i samtliga sökningar för prognosfaktorer ovan**

Från sammanlagt 87 systematiska reviews och meta analyserna (30+40+17 = 87) togs dubletter bort i Zotero och även referenser som förekommit i tidigare utskickade referenslistor. De 62 ref. som blev kvar skickades till projektgruppen för läsning. Av dessa beställde gruppen 7 artiklar i fulltext varav 3 st. ingår i analysen för MSD:

- |   |       |
|---|-------|
| E. MSD, systematic reviews & meta-analysis: | 3 st. |
|---|-------|

---

**Inkluderade artiklar för analysen från litteratursökningarna inom "sjukdomsområdena" och "prognosfaktorer" (se appendix 2)**

- |  |            |
|--|------------|
| A. Cancer:   | 12 studier |
| B. Psykisk ohälsa/mental disorders:  | 13 studier |
| C. MSD/musculoskeletal disorders:  | 19 studier |
| D. MSD/musculoskeletal disorders, pain-studier identifierade i sökningen för "mental disorders": | 6 studier  |
| E. MSD/musculoskeletal disorders, systematic reviews och meta analyser (prognosfaktorer):        | 3 studier  |

**Totalt: 53 artiklar**

---

**Begränsningar**

\* **Publikationsdatum**

Litteratursökningarna har gjorts av artikelreferenser publicerade från och med den 1 nov. 2002 till respektive datum för de olika sökningarna som är angiven i redovisningen av sökstrategierna.

**\* Borttagning av dubletter**

Referenser har maskinellt tagits bort i sökresultat från respektive databas och i referenshanteringssystemet Zotero.

**\* Ej redovisat material som inte har lästs, t ex av uppdaterade litteratursökningar**

Ingen redovisning har skett av det material som inte har hunnit läsas – t ex de uppdateringssökningar som har gjorts för de två tidsperioder som redovisas längst ner i denna inledning.

---

**Referenshanteringssystemet Zotero**

Med hjälp av referenshanteringsverktyget Zotero har dubletter tagits bort i de referenslistor som i ett tidigare skede skickats till projektgruppen för läsning och analys. Trots initial dubblettkontroll har ytterligare dubletter tillkommit vid kompletteringar av referenser från senare sökresultat. Alla referenslistor har sparats i Zotero. Därigenom är det möjligt att i ett senare skede av projektet kunna fortsätta arbeta med materialet och t ex göra skraddarsydda analyser och uttag av referensmaterial.

---

**Artikelurvalet och analysen av artiklarna**

Projektgruppens uppgift var att utifrån de frågeställningar som formulerats göra ett första urval genom att läsa referensernas titlar och därefter i ett andra steg också läsa abstracts för att avgöra vilka artiklar som skall ingå i analysen.

Följande personer har läst, granskat artiklarna och gemensamt samordnat urvals- och analysresultaten inom respektive område:

**Diagnosstratifieringen/ sjukdomsområdena**

**Cancer:** Ingemar Petersson, Jenny Hubertsson

**MSD/rörelseorganens sjukdomar:** Kjerstin Stigmar, Anne Sundén, Charlotta Wåhlin

**Psykisk ohälsa/mental disorders:** Ulrik Lidwall, Jenny Hubertsson

**Prognosfaktorer:** Kjerstin Stigmar, Anne Sundén och Charlotta Wåhlin har läst en del av de systematiska reviewerna och meta-analyserna.

---

**Uppsamlingssökningar för hela 2002 – ej genomgången i förstudien**

Litteratursökningarna har haft en tidsbegränsning att omfatta tiden från och med den 1 nov. 2002. (SBU:s rapport "Sjukskrivning – orsaker, konsekvenser och praxis" inkluderar studier som publicerats t o m den 31 okt. 2002.) Matthias Bank och Carola Tilgmann har gjort kompletterande litteratursökningar för hela 2002, även för tiden 1 jan. till 31 okt. 2002, på grund av den tidsfördröjning som sker i samband med tidskrifternas publiceringsprocess av vetenskapliga artiklar.

Noterbart är att viktiga artiklar publicerade under denna period även ofta täcks av och fångas upp i de systematiska översikter och meta-analyser som publiceras vid senare tidpunkt.

**Uppdateringssökningar för 1 juni – nov. 2014 – ej genomgången i förstudien**

Uppdaterade sökningar har genomförts inom sjukdomsområdena från och med ungefär den 18 juni till mellan den 3 – 5 nov. De olika datum beror på vilken dag och i vilken databas sökningarna gjordes.

Även för de "generella" sökningarna (utan inskränkningar till sjukdomsområden) gjordes uppdateringar för perioden den 17 aug. – 3 nov. 2014.



# Appendix 1

## Inkluderade studier – 53 st.

### A. Cancer

#### 12 inkluderade studier

Urval: Ingemar Petersson, Jenny Hubertsson

(95 ref. från vilka 19 ref. beställdes i fulltext varav 12 inkluderades och 7 exkluderades.)

1.

de Boer AG, Frings-Dresen MH. Employment and the common cancers: return to work of cancer survivors. *Occupational medicine* 2009;59(6):378-380.

2.

Gudbergsson SB, Dahl AA. Aspects of the work situation of cancer survivors. *Minerva psichiastica* 2008;49(1):45-60.

3.

Rick O, Kalusche EM, Dauelsberg T, König V, Korsukéwitz C, Seifart U. Reintegrating cancer patients into the workplace. *Deutsches Ärzteblatt international [electronic resource]* 2012;109(42):702–708.

4.

Verbeek J, Spelten E, Kammeijer M, Sprangers M. Return to work of cancer survivors: a prospective cohort study into the quality of rehabilitation by occupational physicians. *Occupational and Environmental Medicine* 2003;60(5):352-357.

5.

Banning, M. Employment and breast cancer: a meta-ethnography. *European journal of cancer care*. 2011;20(6):708-719.

6.

Chow SL, Ting AS, Su TT. Development of conceptual framework to understand factors associated with return to work among cancer survivors: A systematic review. *Iranian journal of public health* 2014;43(4):391-405.

7.

Duijts SFA, Egmond MP, Spelten E, van Muijen P. Physical and psychosocial problems in cancer survivors beyond return to work: A systematic review. *Psycho-Oncology* 2014;23(5):481-492.

8.

Feuerstein M, Todd BL, Moskowitz MC, Bruns GL, Stoler MR, Nassif T, Yu X. Work in cancer survivors: A model for practice and research. *Journal of cancer survivorship* 2010;4(4):415-437.

9.

Johnsson A, Fornander T, Olsson M, Nystedt M, Johansson H, Rutqvist LE. Factors associated with return to work after breast cancer treatment. *Acta oncologica* 2007;46(1):90-6.

10.

Mehnert A. Employment and work-related issues in cancer survivors. *Critical reviews in oncology/hematology* 2011;77(2):109-130.

11.

Munir F, Yarker J, McDermott H. Employment and the common cancers: correlates of work ability during or following cancer treatment. *Occupational medicine* 2009;59(6):381-389.

12.

van Muijen P, Weevers NL, Snels IA, Duijts SF, Bruinvels DJ, Schellart AJ, van der Beek AJ. Predictors of return to work and employment in cancer survivors: a systematic review. *European journal of cancer care* 2013;22(2):144-160.

## **B. Psykisk ohälsa/mental disorders**

### **13 inkluderade studier**

Urval: Ingemar Petersson, Jenny Hubertsson, Ulrik Lidwall (362 ref. från vilka 12 ref. beställdes i fulltext varav 9 bedömdes och 3 exkluderades. Genom projektgruppen tillkom ytterligare 4 artiklar och totalt inkluderades 13 artiklar.)

1.

Løvvik C, Øverland S, Hysing M, Broadbent E, Reme SE. Association between illness perceptions and return-to-work expectations in workers with common mental health symptoms. *Journal of occupational rehabilitation* 2014;24(1):160–170.

2. Nieuwenhuijsen K, Noordik E, van Dijk FJ, van der Klink JJ. Return to work perceptions and actual return to work in workers with common mental disorders. *Journal of occupational rehabilitation* 2013;23(2):290-299.

3. Roelen CA, Hoedeman R, van Rhenen W, Groothoff JW, van der Klink JJ, Bültmann U. Mental health symptoms as prognostic risk markers of all-cause and psychiatric sickness absence in office workers. *European journal of public health* 2014;24(1):101-105.

4. Flach PA, Groothoff JW, Krol B, Bültmann U. Factors associated with first return to work and sick leave durations in workers with common mental disorders. *European journal of public health* 2012;22(3):440-445.

5. Bryngelson A, Mittendorfer-Rutz E, Jensen I, Lundberg U, Åsberg M, Nygren Å. Self-reported treatment, workplace-oriented rehabilitation, change of occupation and subsequent sickness absence and disability pension among employees long-term sick-listed for psychiatric disorders: A prospective cohort study. *BMJ Open [online]* 2012;2(6):e001704.

6. Andersen MF, Nielsen KM, Brinkmann S. Meta-synthesis of qualitative research on return to work among employees with common mental disorders. *Scandinavian journal of work, environment & health* 2012;38(2):93-104.

7. Bouwmans CA, Vemer P, van Straten A, Tan SS, Hakkaart-van Roijen L. Health-related quality of life and productivity losses in patients with depression and anxiety disorders. *Journal of occupational and environmental medicine* 2014;56(4):420–424.

8. Blank L, Peters J, Pickvance S, Wilford J, Macdonald E. A systematic review of the factors which predict return to work for people suffering episodes of poor mental health. *Journal of occupational rehabilitation* 2008;18(1):27-34.

9. Cornelius LR, van der Klink JJ, Groothoff JW, Brouwer S. Prognostic factors of long term disability due to mental disorders: a systematic review. *Journal of occupational rehabilitation* 2011;21(2):259-274.

10. Duijts SF, Kant I, Swaen GM, van den Brandt PA, Zeegers MP. A meta-analysis of observational studies identifies predictors of sickness absence. *Journal of clinical epidemiology* 2007;60(11):1105-1115.



11. Slebus FG, Kuijer PP, Willems JH, Sluiter JK, Frings-Dresen MH. Prognostic factors for work ability in sicklisted employees with chronic diseases. *Occupational and environmental medicine* 2007;64(12):814-819.

12. Lagerveld SE, Bültmann U, Franche RL, van Dijk FJ, Vlasveld MC, van der Feltz-Cornelis CM, Bruinvels DJ, Huijs JJ, Blonk RW, van der Klink JJ, Nieuwenhuijsen K. Factors associated with work participation and work functioning in depressed workers: a systematic review. *Journal of occupational rehabilitation* 2010;20(3):275-292.

13. Hensing G, Wahlström R. Swedish Council on Technology Assessment in Health Care (SBU). Chapter 7. Sickness absence and psychiatric disorders. *Scandinavian journal of public health supplement* 2004;63:152–180.

### **C. MSD/musculoskeletal disorders**

#### **19 inkluderade studier**

Urval: Ingemar Petersson, Kjerstin Stigmar, Charlotta Wählin  
(330 ref. från vilka 27 ref. beställdes i fulltext varav 19 inkluderades och 8 exkluderades.)

1.

Abásolo L, Carmona L, Lajas C, Candelas G, Blanco M, Loza E, Hernández-García C, Jover JA. Prognostic factors in short-term disability due to musculoskeletal disorders. *Arthritis and rheumatism* 2008;59(4):489-496.

2.

Campbell P, Wynne-Jones G, Muller S, Dunn KM. The influence of employment social support for risk and prognosis in nonspecific back pain: a systematic review and critical synthesis. *International archives of occupational and environmental health* 2013;86(2):119-137.

3.

Carroll LJ, Hogg-Johnson S, Côté P, van der Velde G, Holm LW, Carragee EJ, Hurwitz EL, Peloso PM, Cassidy JD, Guzman J, Nordin M, Haldeman S. Course and prognostic factors for neck pain in workers: results of the Bone and Joint Decade 2000-2010 Task Force on Neck Pain and Its Associated Disorders. *Journal of manipulative and physiological therapeutics* 2009;32(2 Suppl):S108-S116.

4.

Crook J, Milner R, Schultz IZ, Stringer B. Determinants of occupational disability following a low back injury: a critical review of the literature. *J Occup Rehabil.* december 2002;12(4):277–95.

5.

de Croon EM, Sluiter J, Nijssen T, Dijkmans B, Lankhorst G, Frings-Dresen M. Predictive factors of work disability in rheumatoid arthritis: a systematic literature review. *Annals of the rheumatic diseases* 2004;63(11):1362–1367.

6.

de Moraes VY, Godin K, Dos Santos JB, Faloppa F, Bhandari M, Belloti JC. Influence of compensation status on time off work after carpal tunnel release and rotator cuff surgery: a meta-analysis. *Patient safety in surgery [electronic resource]* 2013;7(1):1.

7.

den Boer JJ, Oostendorp RAB, Beems T, Munneke M, Oerlemans M, Evers AWM. A systematic review of bio-psychosocial risk factors for an unfavourable outcome after lumbar disc surgery. *European spine journal* 2006;15(5):527–536.

8.

Detaille SI, Heerkens YF, Engels JA, van der Gulden JWJ, van Dijk FJH. Common prognostic factors of work disability among employees with a chronic somatic disease: a systematic review of cohort studies. *Scandinavian journal of work, environment & health* 2009;35(4):261–281.



9.  
De Vries HJ, Reneman MF, Groothoff JW, Geertzen JHB, Brouwer S. Factors promoting staying at work in people with chronic nonspecific musculoskeletal pain: a systematic review. *Disability and rehabilitation* 2012;34(6):443–458.
10.  
Engebretsen K, Grotle M, Bautz-Holter E, Ekeberg OM, Brox JI. Predictors of shoulder pain and disability index (SPADI) and work status after 1 year in patients with subacromial shoulder pain. *BMC musculoskeletal disorders [electronic resource]* 2010;11:218.
11.  
Hansson T, Jensen I. Swedish Council on Technology Assessment in Health Care (SBU). Chapter 6. Sickness absence due to back and neck disorders. *Scand J Public Health Suppl.* 2004;63:109–51.
12.  
Heymans MW, van Buuren S, Knol DL, Anema JR, van Mechelen W, de Vet HCW. The prognosis of chronic low back pain is determined by changes in pain and disability in the initial period. *Spine journal* 2010;10(10):847–856.
13.  
Jensen OK, Stengaard-Pedersen K, Jensen C, Nielsen CV. Prediction model for unsuccessful return to work after hospital-based intervention in low back pain patients. *BMC musculoskeletal disorders [electronic resource]* 2013;14:140.
14.  
Kuijpers T, Vergouwe Y, van der Heijden GJ, Bot SD, Twisk JW, van der Windt DA, Bouter LM. Generalizability of a prediction rule for sick leave due to shoulder pain. *Scandinavian journal of work, environment & health* 2007;33(6):440–6.
15.  
Puolakka K, Kautiainen H, Möttönen T, Hannonen P, Hakala M, Korpela M, Ilva K, Yli-Kerttula U, Piirainen H, Leirisalo-Repo M; FIN-RACo Trial Troup. Predictors of productivity loss in early rheumatoid arthritis: a 5 year follow up study. *Annals of the rheumatic diseases* 2005;64(1):130-133.
16.  
Shi Q, Sinden K, MacDermid JC, Walton D, Grewal R. A systematic review of prognostic factors for return to work following work-related traumatic hand injury. *Journal of hand therapy* 2014;27(1):55-62; quiz 62.
17.  
Stapelfeldt CM, Christiansen DH, Jensen OK, Nielsen CV, Petersen KD, Jensen C. Subgroup analyses on return to work in sick-listed employees with low back pain in a randomised trial comparing brief and multidisciplinary intervention. *BMC musculoskeletal disorders [electronic resource]* 2011;12:112.
18.  
Storheim K, Brox JI, Holm I, Bø K. Predictors of return to work in patients sick listed for sub-acute low back pain: a 12-month follow-up study. *Journal of rehabilitation medicine* 2005;37(6):365-371.
19.  
van Rijn RM, Robroek SJW, Brouwer S, Burdorf A. Influence of poor health on exit from paid employment: a systematic review. *Occupational and environmental medicine* 2014;71(4):295–301.

#### **D. MSD, pain-studier identifierade i sökningen för “mental disorders”**

##### **6 inkluderade studier**

Urval: Kjerstin Stigmar, Anne Sundén, Charlotta Wåhlin

(97 ref. från vilka 7 ref. beställdes i fulltext varav 6 inkluderades och 1 exkluderades.)

1.

Pengel LH, Herbert RD, Maher CG, Refshauge KM. Acute low back pain: Systematic review of its prognosis. *British medical journal* 2003;327(7410):323-325.

2.

Werner EL, Côté P, Fullen BM, Hayden JA. Physicians' determinants for sick-listing LBP patients: a systematic review. *Clinical journal of pain* 2012;28(4):364-371.

3.

Verkerk K, Luijsterburg PA, Miedema HS, Pool-Goudzwaard A, Koes BW. Prognostic factors for recovery in chronic nonspecific low back pain: a systematic review. *Physical therapy* 2012;92(9):1093-1108.

4.

Wertli MM, Rasmussen-Barr E, Held U, Weiser S, Bachmann LM, Brunner F. Fear-avoidance beliefs-a moderator of treatment efficacy in patients with low back pain: a systematic review. *Spine journal* 2014;14(11):2658-2678.

5.

Hallegraeff JM, Krijnen WP, van der Schans CP, de Greef MH. Expectations about recovery from acute non-specific low back pain predict absence from usual work due to chronic low back pain: a systematic review. *Journal of physiotherapy* 2012;58(3):165-172.

6.

Jensen OK, Nielsen CV, Stengaard-Pedersen K. One-year prognosis in sick-listed low back pain patients with and without radiculopathy. Prognostic factors influencing pain and disability. *Spine journal* 2010;10(8):659-675.

#### **E. MSD, systematic reviews och meta analyser (prognosfaktorer)**

##### **3 inkluderade studier**

Urval: Kjerstin Stigmar, Anne Sundén

(62 ref. från vilka 7 ref. beställdes i fulltext varav 3 inkluderades och 4 exkluderades på grund av att de inte blivit lästa.)

1.

Steenstra IA, Verbeek JH, Heymans MW, Bongers PM. Prognostic factors for duration of sick leave in patients sick listed with acute low back pain: a systematic review of the literature. *Occupational and environmental medicine* 2005;62(12):851-860.

2.

Kuijjer W, Groothoff JW, Brouwer S, Geertzen JH, Dijkstra PU. Prediction of sickness absence in patients with chronic low back pain: a systematic review. *Journal of occupational rehabilitation* 2006;16(3):439-467.

3.

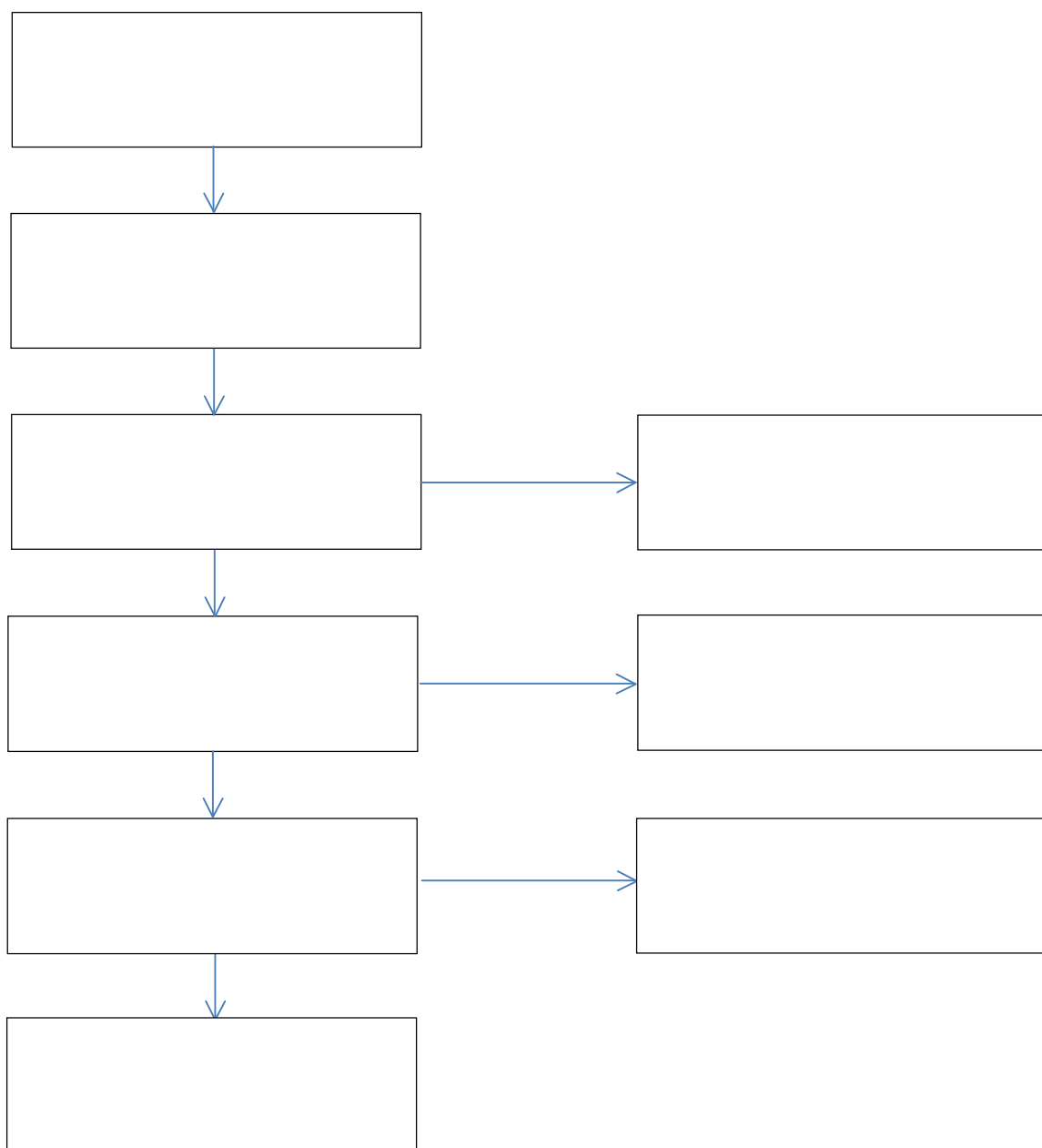
Iles RA, Davidson M, Taylor NF. Psychosocial predictors of failure to return to work in non-chronic non-specific low back pain: a systematic review. *Occupational and environmental medicine* 2008;65(8):507-517.

## Appendix 2

### Urvalsprocess

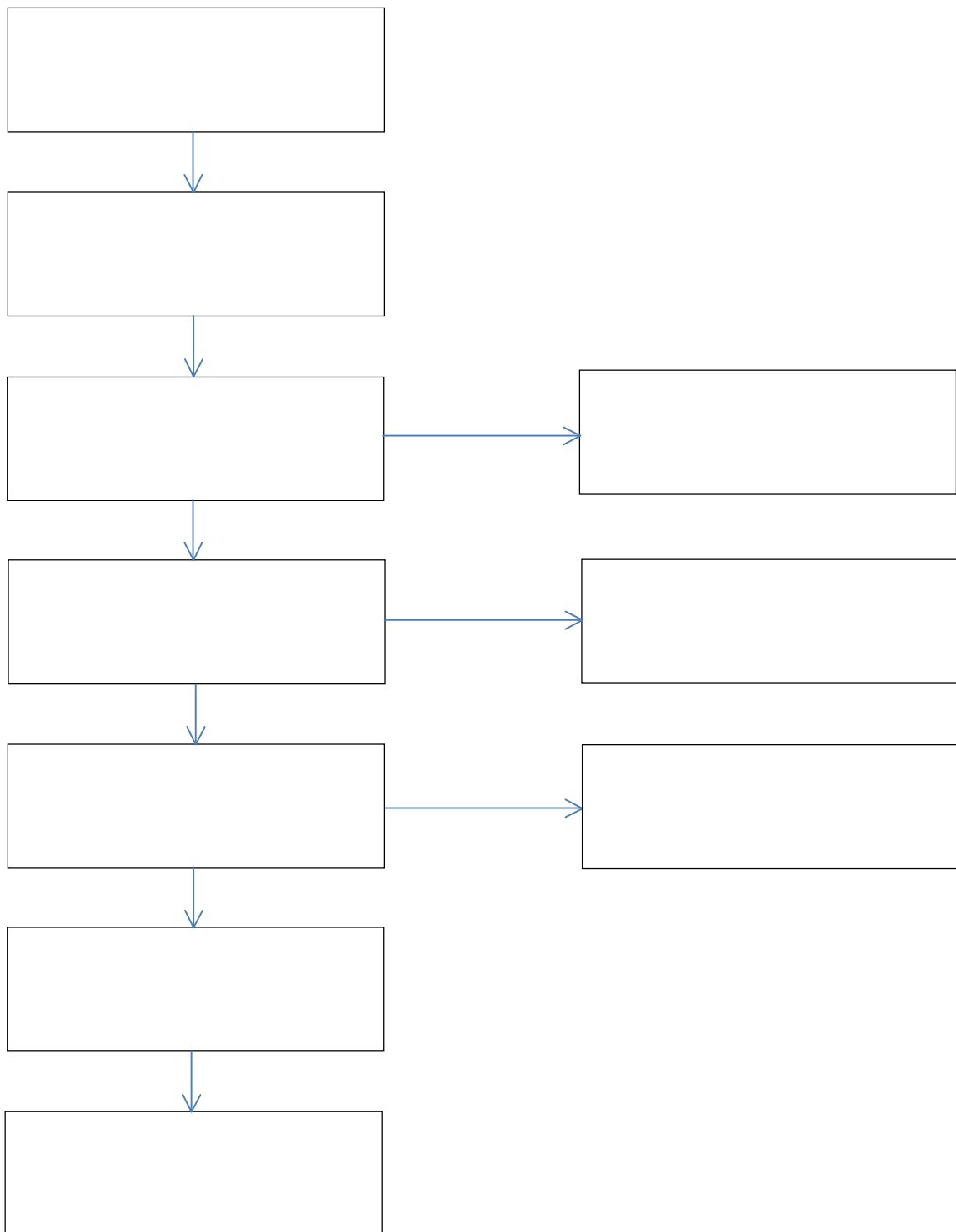
#### A. Cancer

(Urval projektgruppen: Ingemar Petersson, Jenny Hubertsson)

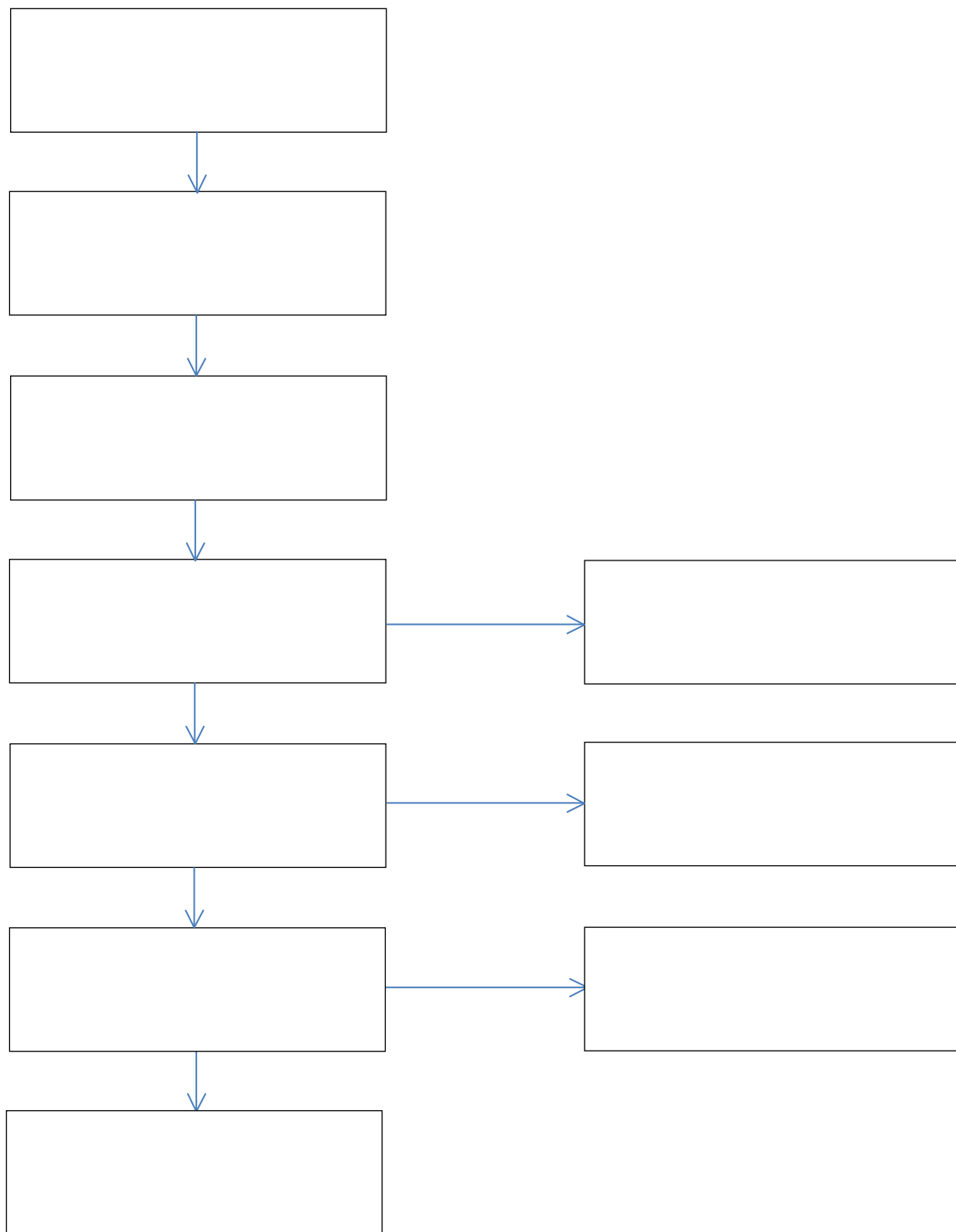


## B. Psykisk ohälsa/mental disorders

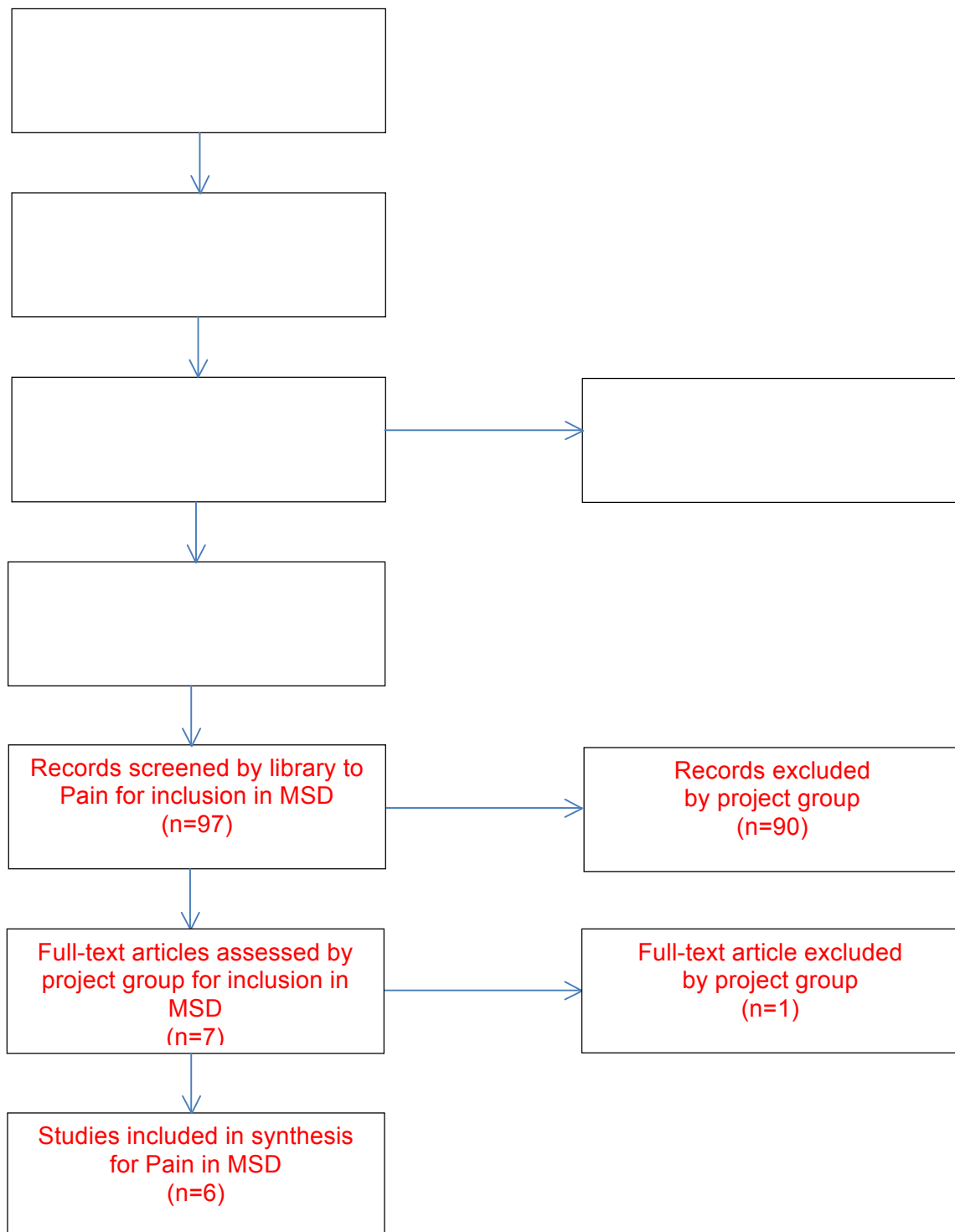
(Urval: Ingemar Petersson, Jenny Hubertsson. Läst: Jenny Hubertsson, Ulrik Lidwall.)



**C. MSD/musculoskeletal disorders, rörelseorganens sjukdomar**  
(Urval projektgruppen: Ingemar Petersson, Kjerstin Stigmar, Charlotta Wåhlin)

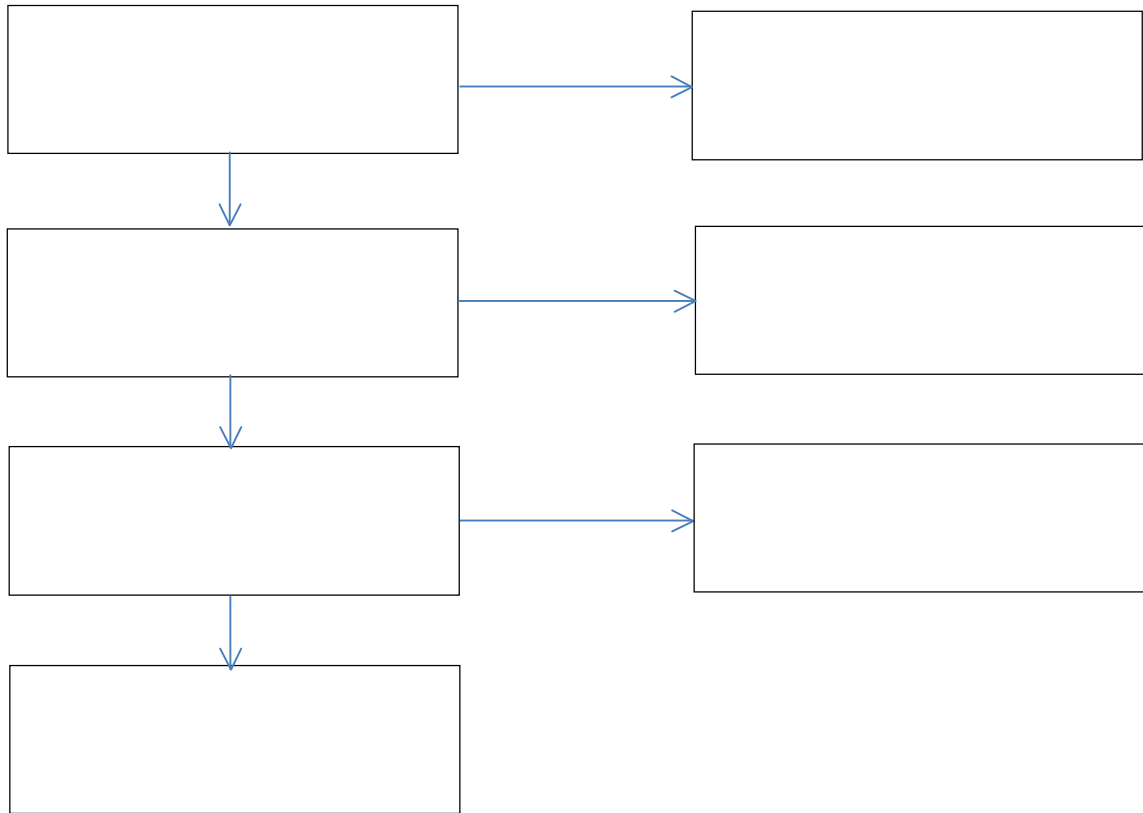


**D. MSD, pain-studier identifierade i sökningen psykisk ohälsa/ mental disorders**  
(Urval: Ingemar Petersson, Jenny Hubertsson. Läst: Jenny Hubertsson, Ulrik Lidwall.)  
**Pain-referenser i "mental disorders" → "MSD"**





**E. MSD, systematic reviews och meta analyser (prognosfaktorer för eller emot en längre sjukskrivning/förtidspension för personer som sjukskrivs)**  
(Urval projektgruppen: Kjerstin Stigmar, Anne Sundén)



## Appendix 3

### Exkluderade artiklar

#### A. Cancer

##### 7 exkluderade studier

Urval: Ingemar Petersson, Jenny Hubertsson

(95 ref. från vilka 19 ref. beställdes i fulltext varav 12 inkluderades och 7 exkluderades.)

Författare, år	Motivering till exklusion
de Boer AG et al. Interventions to enhance return-to-work for cancer patients. Cochrane database of systematic reviews 2011;(2): CD007569.	Reason: Focus on interventions only
Kyle RG et al. Vocational rehabilitation services for patients with cancer. Trials journal [electronic resource] 2011;12:89.	Reason: Focus on one specific intervention only
Tamminga SJ et al. Return-to-work interventions integrated into cancer care: a systematic review. Occupational and environmental medicine 2010;67(9):639-648.	Reason: Focus on interventions only
Tamminga SJ et al. Effectiveness of a hospital-based work support intervention for female cancer patients - a multi-centre randomised controlled trial. PloS one [electronic resource] 2013;8(5):e63271.	Reason: Focus on interventions only
Travis P. Presenteeism at the work place [Danish]. Sygeplejersken/ Danish journal of nursing 2011;111 (10):48-41.	Reason: In Danish
Bjørneklett HG et al. A randomized controlled trial of support group intervention after breast cancer treatment. Acta oncologica 2013;52(1):38-47.	Reason: Focus on one specific intervention only
Hoving JL et al. Return to work of breast cancer survivors. BMC cancer [electronic resource] 2009;9:117.	Reason: Focus on interventions only

## B. Psykisk ohälsa/mental disorders

### 3 exkluderade studier

Urval: Ingemar Petersson, Jenny Hubertsson, Ulrik Lidwall  
(362 ref. från vilka 12 ref. beställdes i fulltext varav 9 bedömdes och 3 exkluderades. Genom projektgruppen tillkom ytterligare 4 artiklar och totalt inkluderades 13 artiklar.)

Författare, år	Motivering till exklusion
Dohrenbusch R, Balg B. [Risk assessment of work disability due to mental disorders]. <i>Versicherungsmedizin</i> 2011;63(1):25–32.	Reason: Language in German
Moriana JA, Herruzo J. Type a behavior pattern as a predictor of psychiatric sick-leaves of Spanish teachers. <i>Psychological reports</i> 2005;96(1):77-82.	Reason: Not relevant. Only risk factors for starting a sick leave, not for duration of sick leave, RTW or work ability
Myette TL. Research on depression in the workplace: where do we go from here? <i>Journal of occupational and environmental medicine</i> 2008;50(4):492-500.	Reason: Not relevant

**C. MSD/musculoskeletal disorders**

**8 exkluderade studier**

Urval: Ingemar Petersson, Kjerstin Stigmar, Charlotta Wåhlin

(330 ref. från vilka 27 ref. beställdes i fulltext varav 19 inkluderades och 8 exkluderades.)

Författare, år	Motivering till exklusion
Bethge M. [Patients with low back pain. Psychosocial work-related factors and return to work - a literature review]. Der Orthopäde 2010;39(9):866-873.	Language: Germany, only abstract in English
Moffett JA, et al. Socioeconomic status predicts functional disability in patients participating in a back pain trial. Disability and rehabilitation 2009;31(10):783-790.	Not relevant outcome
Maksymowych WP, et al. Impact of age, sex, physical function, health-related quality of life, and treatment with adalimumab on work status and work productivity of patients with ankylosing spondylitis. Journal of rheumatology 2010;37(2):385-392.	Not relevant, sickness presence in AS-patients
Merkesdal S et al. [Productivity costs of rheumatoid arthritis in Germany]. [Article in German] Zeitschrift für Rheumatologie 2006;65(6):527-534.	Not relevant outcome (costs)
Skouen JS, et al. Different outcomes in subgroups of patients with long-term musculoskeletal pain. Norsk epidemiologi 2006;16(2):127-135.	Intervention and classification, no predictors
Stomp-van den Berg SGM, et al. Improving return-to-work after childbirth: design of the Mom@Work study, a randomised controlled trial and cohort study. BMC public health 2007;7:43.	Study protocol only
van Oostrom SH, et al. Workplace interventions for preventing work disability. Cochrane database of systematic reviews 2009;(2): CD006955.	No prognostic factors, focus on work place interventions
Varatharajan S et al. Are work disability prevention interventions effective for the management of neck pain or upper extremity disorders? Journal of occupational rehabilitation 2014;24(4):692-708.	Not relevant outcomes on SL and RTW. Work place interventions

#### D. MSD, pain-studier – identifierade i sökningen för “mental disorders”

**1 exkluderad studie** (hämtad från litteratursökning inom ”mental disorders” ur mängden ”pain”)

Urval: Kjerstin Stigmar, Anne Sundén, Charlotta Wåhlin

(97 ref. från vilka 7 ref. beställdes i fulltext varav 6 inkluderades och 1 exkluderades.)

Författare, år	Motivering till exklusion
Wertli MM, et al. Influence of catastrophizing on treatment outcome in patients with nonspecific low back pain. Spine 2014;39(3):263–273.	Not relevant outcome; prediction of treatment outcomes

### E. MSD, systematic reviews och meta analyser (prognosfaktorer)

#### 4 olästa (exkluderade) studier

Urval: Kjerstin Stigmar, Anne Sundén

(62 lästa ref., 7 beställda i fulltext varav 3 st. har lästs och inkluderats. 3 ref. är olästa varför motivering saknas. Den 4:e ref. är ett konferensabstract.)

Författare, år	Motivering till exklusion
Ebrahim S, et al. Measures of patients' expectations about recovery: a systematic review. Journal of occupational rehabilitation 2015;25(1):240-255.	Oläst; motivering saknas
Heitz CA et al. Comparison of risk factors predicting return to work between patients with subacute and chronic non-specific low back pain: systematic review. European spine journal 2009;18(12):1829-1835.	Oläst; motivering saknas
Slebus FG et al. Prognostic factors for work ability in sicklisted employees with chronic diseases. Occupational and environmental medicine 2007;64(12):814-819.	Oläst; motivering saknas
Steenstra, I, et al. Prognostic factors for duration of sick leave in patients sick listed with acute low back pain: An update of a systematic review of the literature. Occupational and Environmental Medicine 2011;68: A74–A75.	Konferensabstract

## Appendix 4

### Sökstrategier

MSD= Musculoskeletal diseases

MD=Mental disorders

Cancer

RCT= randomized controlled trial

All searches include meta-analysis, systematic reviews and randomized controlled trials.

1. Database: PubMed /MSD/Meta-analysis/Systematic Reviews/RCT

Date: 2014-06-18

#1	"Return to Work"[Mesh] OR "Work Capacity Evaluation"[Mesh] OR "Workload"[Mesh] OR "Workplace"[Mesh] OR "Job Satisfaction"[Mesh] OR "return to work" OR "Work Capacity Evaluation" OR "Workload" OR "Workplace" OR "Job Satisfaction" OR "Disability Evaluation"[Mesh] OR "Disability Evaluation" OR "Sick Leave"[Mesh] OR "sick leave" OR "Insurance, Disability"[Mesh] OR "Insurance, Disability" OR "Return to Work" OR "Return to Work"[Mesh] OR "Disability pension" OR "Long term sick leave" OR "Long-term sickness absence" OR "Long-term sickness absentees" OR "Medical leave" OR "Occupational disability" OR "Sick leave more than 14 days/ two weeks" OR "Sick-listed employees" OR "Sickness absence" OR "Sickness absent" OR "Sickness absentee" OR "Sickness certification" OR "Sickness compensation" OR "Work ability" OR "Work capacity" OR "Work disability" OR "Work inability" OR "Work incapacity" OR "sickness absenteeism" OR "occupational disabilities" OR "insurance disability"	128778 hits
#2	"Musculoskeletal Diseases"[Mesh] OR "Musculoskeletal Diseases" OR Arthralgia OR arthritis OR "back pain" OR backache OR "bone injuries" OR "carpal tunnel syndrome" OR "chronic pain" OR epicondylitis OR fibromyalgia OR "knee osteoarthritis" OR "low back pain (LBP)" OR "lower back pain" OR "musculoskeletal diseases" OR "musculoskeletal disorders" OR "musculoskeletal pain" OR "neck pain" OR "osteoarthritis" OR "osteoporosis" OR "rheumatic disease" OR "rheumatoid arthritis" OR "spinal cord injuries" OR "Bone injury" OR "spinal cord injury" OR "spinal cord inflammation" OR "rheumatic diseases"	993647 hits
#3	#1 AND #2	10694 hits
	#3 limit: publication date: 20021101-20141231	
	#3 limit : Meta-analysis	122 hits
	#3 limit : Systematic Reviews	692 hits
	#3 limit : Random Controlled Trials	1126 hits

1. Database: PubMed/MD /Meta-analysis/Systematic Reviews/RCT

Date: 2014-06-18

#1	"Return to Work"[Mesh] OR "Work Capacity Evaluation"[Mesh] OR "Workload"[Mesh] OR "Workplace"[Mesh] OR "Job Satisfaction"[Mesh] OR "return to work" OR "Work Capacity Evaluation" OR "Workload" OR "Workplace" OR "Job Satisfaction" OR "Disability Evaluation"[Mesh] OR "Disability Evaluation" OR "Sick Leave"[Mesh] OR "sick leave" OR "Insurance, Disability"[Mesh] OR "Insurance, Disability" OR "Return to Work" OR "Return to Work"[Mesh] OR "Disability pension" OR "Long term sick leave" OR "Long-term sickness absence" OR "Long-term sickness absentees" OR "Medical leave" OR "Occupational disability" OR "Sick leave more than 14 days/ two weeks" OR "Sick-listed employees" OR "Sickness absence" OR "Sickness absent" OR "Sickness absentee" OR "Sickness certification" OR "Sickness compensation" OR "Work ability" OR "Work capacity" OR "Work disability" OR "Work inability" OR "Work incapacity" OR "sickness absenteeism" OR "occupational disabilities" OR "insurance disability"	128778 hits
#2	Adhd OR alcoholism OR anxiety OR "anxiety disorder" OR "appetite disorders" OR "behavior disorders" OR "bipolar disorders" OR burnout OR "chronic disease" OR "cognitive defect" OR dementia OR depression OR disability OR "distress syndrome" OR "drug dependence" OR "eating disorders" OR fatigue OR headache OR insomnia OR "major depression" OR "mental disease" OR "mental health issues" OR "mental health problems" OR "mood disorder" OR "posttraumatic stress disorder" OR "psychological disorders" OR "psychological factors" OR psychosis OR schizophrenia OR "sleep disorder" OR stress OR "stress-related mental disorders" OR "substance abuse" OR autism OR migraine OR "Nervous System Diseases"[Mesh]OR "Nervous System Diseases"	3448014 hits
#3	#1 AND #2 AND #3 limit: publication date: 20021101-20141231	35613 hits
	#3 limit : Meta-analysis	273 hits
	#3 limit : Systematic Reviews	1585hits
	#3 limit : Random Controlled Trials	2308 hits



1. Database: PubMed /Cancer/ Meta-analysis/Systematic Reviews/RCT

Date: 2014-06-18

#1	<p>"Return to Work"[Mesh] OR "Work Capacity Evaluation"[Mesh] OR "Workload"[Mesh] OR "Workplace"[Mesh] OR "Job Satisfaction"[Mesh] OR "return to work" OR "Work Capacity Evaluation" OR "Workload" OR "Workplace" OR "Job Satisfaction" OR "Disability Evaluation"[Mesh] OR "Disability Evaluation" OR "Sick Leave"[Mesh] OR "sick leave" OR "Insurance, Disability"[Mesh] OR "Insurance, Disability" OR "Return to Work" OR "Return to Work"[Mesh] OR "Disability pension" OR "Long term sick leave" OR "Long-term sickness absence" OR "Long-term sickness absentees" OR "Medical leave" OR "Occupational disability" OR "Sick leave more than 14 days/ two weeks" OR "Sick-listed employees" OR "Sickness absence" OR "Sickness absent" OR "Sickness absentee" OR "Sickness certification" OR "Sickness compensation" OR "Work ability" OR "Work capacity" OR "Work disability" OR "Work inability" OR "Work incapacity" OR "sickness absenteeism" OR "occupational disabilities" OR "insurance disability"</p>	128778 hits
#2	<p>"neoplasms"[MeSH Terms] OR cancer[Text Word] OR "neoplasms" OR "acute leukemia" OR "bladder cancer" OR "bladder tumor" OR "brain cancer" OR "brain tumor" OR "breast cancer" OR "breast neoplasms" OR "breast tumor" OR cancer OR "central nervous system tumor" OR "chronic myeloid leukemia" OR "colon cancer" OR "colonic neoplasms" OR "colorectal cancer" OR "colorectal neoplasms" OR "digestive system cancer" OR "esophagus tumor" OR "esophageal neoplasms" OR "hepatic cancer" OR "intestine cancer" OR "intestinal neoplasms" OR "kidney cancer" OR "kidney neoplasms" OR "leukemia" OR "liver cancer" OR "liver neoplasms" OR "lung cancer" OR "lung carcinoma" OR "lung neoplasms" OR "lymphatic leukemia" OR "lymphoid leukemia" OR lymphoma OR meningioma OR metastasis OR "myeloid leukemia" OR neoplasm OR neoplasms OR "nonhodgkin lymphoma" OR "ovary cancer" OR "ovary tumor" OR "ovarian neoplasms" OR "ovarian cancer" OR "pancreas tumor" OR "pancreatic cancer" OR "pancreatic neoplasms" OR "prostate cancer" OR "prostate tumor" OR "prostatic cancer" OR "prostatic neoplasms" OR "stomach cancer" OR "stomach neoplasms" OR "gastric cancer" OR "gastric neoplasms" OR "testis cancer" OR "testis tumor" OR "testicular cancer" OR "testicular neoplasms" OR "thyroid cancer" OR "thyroid neoplasms" OR "uterus cancer" OR "uterus tumor" OR "uterus neoplasms" OR "uterine neoplasms" OR "uterine cancer"</p> <p>limit: publication date: 20021101-20141231</p>	1301214 hits
#3	#1 AND #2 AND limit: publication date: 20021101-20141231	
	#3 limit : Meta-analysis	28 hits
	#3 limit : Systematic Reviews	120 hits
	#3 limit : Random Controlled Trials	97 hits

## 2. Database: Embase/MSD/Systematic Reviews/Meta-analysis

Date: 2014-06-17/2014-06-18

#1	'disability pension' OR 'long term sick' OR 'long term sickness' OR 'medical leave'/exp OR 'medical leave' OR 'occupational disability' OR 'occupational disabilities' OR 'sick leave'/exp OR 'sick leave' OR 'sick-listed employees' OR 'sick-listed employee' OR 'sickness absence'/exp OR 'sickness absence' OR 'sickness absent'	18514 hits
#2	'sickness absentee' OR 'sickness absentees' OR 'sickness absenteeism'/exp OR 'sickness absenteeism' OR 'sickness certification' OR 'sickness compensation' OR 'work ability'/exp OR 'work ability' OR 'work capacity'/exp OR 'work capacity' OR 'work disability'/exp OR 'work disability' OR 'work inability' OR 'work incapacity'/exp OR 'work incapacity'	28887 hits
#3	#1 OR #2	33434 hits
#4	'arthralgia'/exp OR 'arthralgia' OR 'arthritis'/exp OR 'arthritis' OR 'back pain'/exp OR 'back pain' OR 'backache'/exp OR 'backache' OR 'bone injury'/exp OR 'bone injury' OR 'bone injuries' OR 'carpal tunnel syndrome'/exp OR 'carpal tunnel syndrome' OR 'chronic pain'/exp OR 'chronic pain' OR 'epicondylitis'/exp OR 'epicondylitis' OR 'fibromyalgia'/exp OR 'fibromyalgia' OR 'knee osteoarthritis'/exp OR 'knee osteoarthritis' OR 'lbp' OR 'lower back pain'/exp OR 'lower back pain' OR 'musculoskeletal diseases'/exp OR 'musculoskeletal diseases' OR 'musculoskeletal disorders' OR 'musculoskeletal pain'/exp OR 'musculoskeletal pain' OR 'neck pain'/exp OR 'neck pain' OR 'osteoarthritis'/exp OR 'osteoarthritis' OR 'osteoporosis'/exp OR 'osteoporosis' OR 'rheumatic diseases'/exp OR 'rheumatic diseases' OR 'rheumatoid arthritis'/exp OR 'rheumatoid arthritis' OR 'spinal cord injuries'/exp OR 'spinal cord injuries' OR 'spinal cord inflammation'/exp OR 'spinal cord inflammation' OR 'rheumatic disease'/exp OR 'rheumatic disease' OR 'spinal cord injury'/exp OR 'spinal cord injury'	1845997 hits
#5	#3 AND #4	7217 hits
#6	#5 AND ([systematic review]/lim OR [meta analysis]/lim) AND [1-11-2002]/sd NOT [17-6-2014]/sd	169 hits
#7	#6 AND ('article'/it OR 'review'/it)	134 hits

## 2. Database: Embase/MSD/RCT

Date: 2014-06-17/2014-06-18

#1	'disability pension' OR 'long term sick' OR 'long term sickness' OR 'medical leave'/exp OR 'medical leave' OR 'occupational disability' OR 'occupational disabilities' OR 'sick leave'/exp OR 'sick leave' OR 'sick-listed employees' OR 'sick-listed employee' OR 'sickness absence'/exp OR 'sickness absence' OR 'sickness absent'	18514 hits
#2	'sickness absentee' OR 'sickness absentees' OR 'sickness absenteeism'/exp OR 'sickness absenteeism' OR 'sickness certification' OR 'sickness compensation' OR 'work ability'/exp OR 'work ability' OR 'work capacity'/exp OR 'work capacity' OR 'work disability'/exp OR 'work disability' OR 'work inability' OR 'work incapacity'/exp OR 'work incapacity'	28887 hits
#3	#1 OR #2	33434 hits
#4	'arthralgia'/exp OR 'arthralgia' OR 'arthritis'/exp OR 'arthritis' OR 'back pain'/exp OR 'back pain' OR 'backache'/exp OR 'backache' OR 'bone injury'/exp OR 'bone injury' OR 'bone injuries' OR 'carpal tunnel syndrome'/exp OR 'carpal tunnel syndrome' OR 'chronic pain'/exp OR 'chronic pain' OR 'epicondylitis'/exp OR 'epicondylitis' OR 'fibromyalgia'/exp OR 'fibromyalgia' OR 'knee osteoarthritis'/exp OR 'knee osteoarthritis' OR 'lbp' OR 'lower back pain'/exp OR 'lower back pain' OR 'musculoskeletal diseases'/exp OR 'musculoskeletal diseases' OR 'musculoskeletal disorders' OR 'musculoskeletal pain'/exp OR 'musculoskeletal pain' OR 'neck pain'/exp OR 'neck pain' OR 'osteoarthritis'/exp OR 'osteoarthritis' OR 'osteoporosis'/exp OR 'osteoporosis' OR 'rheumatic diseases'/exp OR 'rheumatic diseases' OR 'rheumatoid arthritis'/exp OR 'rheumatoid arthritis' OR 'spinal cord injuries'/exp OR 'spinal cord injuries' OR 'spinal cord inflammation'/exp OR 'spinal cord inflammation' OR 'rheumatic disease'/exp OR 'rheumatic disease' OR 'spinal cord injury'/exp OR 'spinal cord injury'	1845997 hits
#5	#3 AND #4	7217 hits
#6	#5 AND randomized controlled trial/lim AND 1-11-2002/sd NOT 17-6-2014/sd	370 hits
#7	#6 AND 'article'/it OR 'review'/it	333 hits

2. Database: Embase/MD/ Systematic Reviews/Meta-analysis

Date: 2014-06-17/2014-06-18

#1	'disability pension' OR 'long term sick' OR 'long term sickness' OR 'medical leave'/exp OR 'medical leave' OR 'occupational disability' OR 'occupational disabilities' OR 'sick leave'/exp OR 'sick leave' OR 'sick-listed employees' OR 'sick-listed employee' OR 'sickness absence'/exp OR 'sickness absence' OR 'sickness absent'	18514 hits
#2	'sickness absentee' OR 'sickness absentees' OR 'sickness absenteeism'/exp OR 'sickness absenteeism' OR 'sickness certification' OR 'sickness compensation' OR 'work ability'/exp OR 'work ability' OR 'work capacity'/exp OR 'work capacity' OR 'work disability'/exp OR 'work disability' OR 'work inability' OR 'work incapacity'/exp OR 'work incapacity'	28887 hits
#3	#1 OR #2	33434 hits
#4	'adhd'/exp OR 'adhd' OR 'alcoholism'/exp OR 'alcoholism' OR 'anxiety'/exp OR 'anxiety' OR 'anxiety disorder'/exp OR 'anxiety disorder' OR 'appetite disorders' OR 'behavior disorder'/exp OR 'behavior disorder' OR 'behavior disorders' OR 'bipolar disorder'/exp OR 'bipolar disorder' OR 'bipolar disorders' OR 'burnout'/exp OR 'burnout' OR 'chronic disease'/exp OR 'chronic disease' OR 'cognitive defect'/exp OR 'cognitive defect' OR 'cognitive defects'/exp OR 'cognitive defects' OR 'dementia'/exp OR 'dementia' OR 'depression'/exp OR 'depression' OR 'learning disability'/exp OR 'learning disability' OR 'mental retardation'/exp OR 'mental retardation' OR 'intellectual disability'/exp OR 'intellectual disability' OR 'cognitive impairment'/exp OR 'cognitive impairment'	1511415 hits
#5	'distress syndrome'/exp OR 'distress syndrome' OR 'drug dependence'/exp OR 'drug dependence' OR 'eating disorders'/exp OR 'eating disorders' OR 'fatigue'/exp OR 'fatigue' OR 'headache'/exp OR 'headache' OR 'insomnia'/exp OR 'insomnia' OR 'major depression'/exp OR 'major depression' OR 'mental disease'/exp OR 'mental disease' OR 'mental diseases' OR 'mental health issues' OR 'mental health problems' OR 'mood disorder'/exp OR 'mood disorder' OR 'posttraumatic stress disorder'/exp OR 'posttraumatic stress disorder' OR 'psychological disorder'/exp OR 'psychological disorder' OR 'psychological disorders'	1872036 hits
#6	'psychological factor'/exp OR 'psychological factor' OR 'psychological factors' OR 'psychosis'/exp OR 'psychosis' OR 'schizophrenia'/exp OR 'schizophrenia' OR 'sleep disorder'/exp OR 'sleep disorder' OR 'stress'/exp OR 'stress' OR 'stress-related mental' OR 'substance abuse'/exp OR 'substance abuse'	1569862 hits

#7	#4 OR #5 OR #6	3164653 hits
#8	#3 AND #7 AND systematic review lim OR meta analysis lim AND 1-11-2002sd NOT17-6-2014/sd	138 hits
#9	#8 AND ('article'/it OR 'review'/it)	117 hits

2. Database: Embase/MD/RCT

Date: 2014-06-17/2014-06-18

#1	'disability pension' OR 'long term sick' OR 'long term sickness' OR 'medical leave'/exp OR 'medical leave' OR 'occupational disability' OR 'occupational disabilities' OR 'sick leave'/exp OR 'sick leave' OR 'sick-listed employees' OR 'sick-listed employee' OR 'sickness absence'/exp OR 'sickness absence' OR 'sickness absent'	18514 hits
#2	'sickness absentee' OR 'sickness absentees' OR 'sickness absenteeism'/exp OR 'sickness absenteeism' OR 'sickness certification' OR 'sickness compensation' OR 'work ability'/exp OR 'work ability' OR 'work capacity'/exp OR 'work capacity' OR 'work disability'/exp OR 'work disability' OR 'work inability' OR 'work incapacity'/exp OR 'work incapacity'	28887 hits
#3	#1 OR #2	33434 hits
#4	'adhd'/exp OR 'adhd' OR 'alcoholism'/exp OR 'alcoholism' OR 'anxiety'/exp OR 'anxiety' OR 'anxiety disorder'/exp OR 'anxiety disorder' OR 'appetite disorders' OR 'behavior disorder'/exp OR 'behavior disorder' OR 'behavior disorders' OR 'bipolar disorder'/exp OR 'bipolar disorder' OR 'bipoloar disorders' OR 'burnout'/exp OR 'burnout' OR 'chronic disease'/exp OR 'chronic disease' OR 'cognitive defect'/exp OR 'cognitive defect' OR 'cognitive defects'/exp OR 'cognitive defects' OR 'dementia'/exp OR 'dementia' OR 'depression'/exp OR 'depression' OR 'learning disability'/exp OR 'learning disability' OR 'mental retardation'/exp OR 'mental retardation' OR 'intellectual disability'/exp OR 'intellectual disability' OR 'cognitive impairment'/exp OR 'cognitive impairment'	1511415 hits
#5	'distress syndrome'/exp OR 'distress syndrome' OR 'drug dependence'/exp OR 'drug dependence' OR 'eating disorders'/exp OR 'eating disorders' OR 'fatigue'/exp OR 'fatigue' OR 'headache'/exp OR 'headache' OR 'insomnia'/exp OR 'insomnia' OR 'major depression'/exp OR 'major depression' OR 'mental disease'/exp OR 'mental disease' OR 'mental diseases' OR 'mental health issues' OR 'mental health problems' OR 'mood disorder'/exp OR 'mood disorder' OR 'posttraumatic stress disorder'/exp OR 'posttraumatic stress disorder' OR 'psychological disorder'/exp OR 'psychological disorder' OR 'psychological disorders'	1872036 hits
#6	'psychological factor'/exp OR 'psychological factor' OR 'psychological factors' OR 'psychosis'/exp OR 'psychosis' OR 'schizophrenia'/exp OR 'schizophrenia' OR 'sleep disorder'/exp OR 'sleep disorder' OR 'stress'/exp OR 'stress' OR 'stress-related mental' OR 'substance abuse'/exp OR 'substance abuse'	1569862 hits
#7	#4 OR #5 OR #6	3164653 hits

#8	#3 AND #7 AND systematic review/lim OR meta analysis/lim AND [1-11-2002/sd NOT 17-6-2014/sd	138 hits
#9	#8 AND 'article'/it OR 'review'/it	117 hits
#10	#3 AND #7 AND randomized controlled trial/lim AND 1-11-2002/sd NOT 17-6-2014/sd	347 hits
#11	#10 AND 'article'/it OR 'review'/it	325 hits
#12	#11 NOT #9	311 hits

2. Database: Embase /Cancer/ Systematic Reviews/Meta-analysis  
Date: 2014-06-18

#1	'disability pension' OR 'long term sick' OR 'long term sickness' OR 'medical leave'/exp OR 'medical leave' OR 'occupational disability' OR 'occupational disabilities' OR 'sick leave'/exp OR 'sick leave' OR 'sick-listed employees' OR 'sick-listed employee' OR 'sickness absence'/exp OR 'sickness absence' OR 'sickness absent'	18516 hits
#2	'sickness absentee' OR 'sickness absentees' OR 'sickness absenteeism'/exp OR 'sickness absenteeism' OR 'sickness certification' OR 'sickness compensation' OR 'work ability'/exp OR 'work ability' OR 'work capacity'/exp OR 'work capacity' OR 'work disability'/exp OR 'work disability' OR 'work inability' OR 'work incapacity'/exp OR 'work incapacity'	28890 hits
#3	#1 OR #2	33437 hits
#4	'acute leukemia'/exp OR 'acute leukemia' OR 'bladder cancer'/exp OR 'bladder cancer' OR 'bladder tumor'/exp OR 'bladder tumor' OR 'brain cancer'/exp OR 'brain cancer' OR 'brain tumor'/exp OR 'brain tumor' OR 'breast cancer'/exp OR 'breast cancer' OR 'breast neoplasms'/exp OR 'breast neoplasms' OR 'breast tumor'/exp OR 'breast tumor' OR 'cancer'/exp OR 'cancer' OR 'central nervous system tumor'/exp OR 'central nervous system tumor' OR 'chronic myeloid leukemia'/exp OR 'chronic myeloid leukemia' OR 'colon cancer'/exp OR 'colon cancer' OR 'colonic neoplasms'/exp OR 'colonic neoplasms' OR 'colorectal cancer'/exp OR 'colorectal cancer' OR 'colorectal neoplasms'/exp OR 'colorectal neoplasms' OR 'digestive system cancer'/exp OR 'digestive system cancer'	3916655 hits
#5	'esophagus tumor'/exp OR 'esophagus tumor' OR 'esophageal neoplasms'/exp OR 'esophageal neoplasms' OR 'hepatic cancer'/exp OR 'hepatic cancer' OR 'intestine cancer'/exp OR 'intestine cancer' OR 'intestinal neoplasms'/exp OR 'intestinal neoplasms' OR 'kidney cancer'/exp OR 'kidney cancer' OR 'kidney neoplasms'/exp OR 'kidney neoplasms' OR 'leukemia'/exp OR 'leukemia' OR 'liver cancer'/exp OR 'liver cancer' OR 'liver neoplasms'/exp OR 'liver neoplasms' OR 'lung cancer'/exp OR 'lung cancer' OR 'lung carcinoma'/exp OR 'lung carcinoma' OR 'lung neoplasms'/exp OR 'lung neoplasms' OR 'lymphatic leukemia'/exp OR 'lymphatic leukemia' OR 'lymphoid leukemia'/exp OR 'lymphoid leukemia' OR 'lymphoma'/exp OR 'lymphoma' OR 'meningioma'/exp OR 'meningioma'	1313532 hits
#6	'metastasis'/exp OR 'metastasis' OR 'myeloid leukemia'/exp OR 'myeloid leukemia' OR 'neoplasm'/exp OR 'neoplasm' OR 'neoplasms'/exp OR 'neoplasms' OR 'nonhodgkin lymphoma'/exp OR 'nonhodgkin lymphoma' OR 'ovary cancer'/exp OR 'ovary cancer' OR 'ovary tumor'/exp OR 'ovary tumor' OR 'ovarian neoplasms'/exp OR	3402904 hits



	'ovarian neoplasms' OR 'ovarian cancer'/exp OR 'ovarian cancer' OR 'pancreas tumor'/exp OR 'pancreas tumor' OR 'pancreatic cancer'/exp OR 'pancreatic cancer' OR 'pancreatic neoplasms'/exp OR 'pancreatic neoplasms' OR 'prostate cancer'/exp OR 'prostate cancer' OR 'prostate tumor'/exp OR 'prostate tumor' OR 'prostatic cancer'/exp OR 'prostatic cancer' OR 'prostatic neoplasms'/exp OR 'prostatic neoplasms' OR 'stomach cancer'/exp OR 'stomach cancer' OR 'stomach neoplasms'/exp OR 'stomach neoplasms' OR 'gastric cancer'/exp OR 'gastric cancer' OR 'gastric neoplasms'	
#7	'testis cancer'/exp OR 'testis cancer' OR 'testis tumor'/exp OR 'testis tumor' OR 'testicular cancer'/exp OR 'testicular cancer' OR 'testicular neoplasms'/exp OR 'testicular neoplasms' OR 'thyroid cancer'/exp OR 'thyroid cancer' OR 'thyroid neoplasms'/exp OR 'thyroid neoplasms' OR 'uterus cancer'/exp OR 'uterus cancer' OR 'uterus tumor'/exp OR 'uterus tumor' OR 'uterus neoplasms' OR 'uterine neoplasms'/exp OR 'uterine neoplasms' OR 'uterine cancer'/exp OR 'uterine cancer'	242786 hits
#8	#4 OR #5 OR #6 OR #7	3981947 hits
#9	#3 AND #8	1424 hits
#10	#9 AND cochrane review/lim OR systematic review/lim OR meta analysis/lim AND 1-11-2002/sd NOT 18-6-2014/sd	27 hits
#11	#10 AND 'article'/it OR 'review'/it	21 hits

3. Database: Embase/Cancer/RCT  
Date: 2014-06-18

#1	'disability pension' OR 'long term sick' OR 'long term sickness' OR 'medical leave'/exp OR 'medical leave' OR 'occupational disability' OR 'occupational disabilities' OR 'sick leave'/exp OR 'sick leave' OR 'sick-listed employees' OR 'sick-listed employee' OR 'sickness absence'/exp OR 'sickness absence' OR 'sickness absent'	18516 hits
#2	'sickness absentee' OR 'sickness absentees' OR 'sickness absenteeism'/exp OR 'sickness absenteeism' OR 'sickness certification' OR 'sickness compensation' OR 'work ability'/exp OR 'work ability' OR 'work capacity'/exp OR 'work capacity' OR 'work disability'/exp OR 'work disability' OR 'work inability' OR 'work incapacity'/exp OR 'work incapacity'	28890 hits
#3	#1 OR #2	33437 hits
#4	'acute leukemia'/exp OR 'acute leukemia' OR 'bladder cancer'/exp OR 'bladder cancer' OR 'bladder tumor'/exp OR 'bladder tumor' OR 'brain cancer'/exp OR 'brain cancer' OR 'brain tumor'/exp OR 'brain tumor' OR 'breast cancer'/exp OR 'breast cancer' OR 'breast neoplasms'/exp OR 'breast neoplasms' OR 'breast tumor'/exp OR 'breast tumor' OR 'cancer'/exp OR 'cancer' OR 'central nervous system tumor'/exp OR 'central nervous system tumor' OR 'chronic myeloid leukemia'/exp OR 'chronic myeloid leukemia' OR 'colon cancer'/exp OR 'colon cancer' OR 'colonic neoplasms'/exp OR 'colonic neoplasms' OR 'colorectal cancer'/exp OR 'colorectal cancer' OR 'colorectal neoplasms'/exp OR 'colorectal neoplasms' OR 'digestive system cancer'/exp OR 'digestive system cancer'	3916655 hits
#5	'esophagus tumor'/exp OR 'esophagus tumor' OR 'esophageal neoplasms'/exp OR 'esophageal neoplasms' OR 'hepatic cancer'/exp OR 'hepatic cancer' OR 'intestine cancer'/exp OR 'intestine cancer' OR 'intestinal neoplasms'/exp OR 'intestinal neoplasms' OR 'kidney cancer'/exp OR 'kidney cancer' OR 'kidney neoplasms'/exp OR 'kidney neoplasms' OR 'leukemia'/exp OR 'leukemia' OR 'liver cancer'/exp OR 'liver cancer' OR 'liver neoplasms'/exp OR 'liver neoplasms' OR 'lung cancer'/exp OR 'lung cancer' OR 'lung carcinoma'/exp OR 'lung carcinoma' OR 'lung neoplasms'/exp OR 'lung neoplasms' OR 'lymphatic leukemia'/exp OR 'lymphatic leukemia' OR 'lymphoid leukemia'/exp OR 'lymphoid leukemia' OR 'lymphoma'/exp OR 'lymphoma' OR 'meningioma'/exp OR 'meningioma'	1313532 hits
#6	'metastasis'/exp OR 'metastasis' OR 'myeloid leukemia'/exp OR 'myeloid leukemia' OR 'neoplasm'/exp OR 'neoplasm' OR 'neoplasms'/exp OR 'neoplasms' OR 'nonhodgkin lymphoma'/exp OR 'nonhodgkin lymphoma' OR 'ovary cancer'/exp OR 'ovary cancer' OR 'ovary tumor'/exp OR 'ovary tumor' OR 'ovarian neoplasms'/exp OR	3402904 hits

	'ovarian neoplasms' OR 'ovarian cancer'/exp OR 'ovarian cancer' OR 'pancreas tumor'/exp OR 'pancreas tumor' OR 'pancreatic cancer'/exp OR 'pancreatic cancer' OR 'pancreatic neoplasms'/exp OR 'pancreatic neoplasms' OR 'prostate cancer'/exp OR 'prostate cancer' OR 'prostate tumor'/exp OR 'prostate tumor' OR 'prostatic cancer'/exp OR 'prostatic cancer' OR 'prostatic neoplasms'/exp OR 'prostatic neoplasms' OR 'stomach cancer'/exp OR 'stomach cancer' OR 'stomach neoplasms'/exp OR 'stomach neoplasms' OR 'gastric cancer'/exp OR 'gastric cancer' OR 'gastric neoplasms'	
#7	'testis cancer'/exp OR 'testis cancer' OR 'testis tumor'/exp OR 'testis tumor' OR 'testicular cancer'/exp OR 'testicular cancer' OR 'testicular neoplasms'/exp OR 'testicular neoplasms' OR 'thyroid cancer'/exp OR 'thyroid cancer' OR 'thyroid neoplasms'/exp OR 'thyroid neoplasms' OR 'uterus cancer'/exp OR 'uterus cancer' OR 'uterus tumor'/exp OR 'uterus tumor' OR 'uterus neoplasms' OR 'uterine neoplasms'/exp OR 'uterine neoplasms' OR 'uterine cancer'/exp OR 'uterine cancer'	242786 hits
#8	#4 OR #5 OR #6 OR #7	3981947 hits
#9	#3 AND #8	1424 hits
#10	#9 AND randomized controlled trial/lim AND 1-11-2002/sd NOT 18-6-2014/sd	52 hits
#11	#10 AND 'Article'/it OR 'Review'/it	43 hits

3. Database: PsycInfo/MD/ Systematic Review/Meta-Analysis

Date: 2014-06-18

#1	<p>"disability pension" OR "long term sick" OR "long term sickness" OR "medical leave" OR "occupational disability" OR "occupational disabilities" OR "sick leave" OR "sick-listed employees" OR "sick-listed employee" OR "sickness absence" OR "sickness absent" Search modes - Find all my search terms - EBSCOhost Research Databases Search Screen - Advanced Search Database – PsycINFO</p>	1903 hits
#2	<p>"sickness absentee" OR "sickness absentees" OR "sickness absenteeism" OR "sickness certification" OR "sickness compensation" OR "work ability" OR "work capacity" OR "work disability" OR "work inability" OR "work incapacity" Search modes - Find all my search terms Interface - EBSCOhost Research Databases Search Screen - Advanced Search Database - PsycINFO Interface - EBSCOhost Research Databases Search Screen - Advanced Search Database – PsycINFO</p>	1530 hits
#3	<p>DE "Employee Leave Benefits" Search modes - Find all my search terms Interface - EBSCOhost Research Databases Search Screen - Advanced Search Database - PsycINFO</p>	693 hits
#4	<p>#1 OR #2 OR #3 Search modes - Find all my search terms Interface - EBSCOhost Research Databases Search Screen - Advanced Search Database - PsycINFO</p>	3518 hits
#5	<p>"adhd" OR "alcoholism" OR "anxiety" OR "anxiety disorder" OR "appetite disorders" OR "behavior disorder" OR "behavior disorders" OR "bipolar disorder" OR "bipolar disorders" OR "burnout" OR "chronic disease" OR "cognitive defect" OR "cognitive defects" OR "dementia" OR "depression" OR "learning disability" OR "mental retardation" OR "intellectual disability" OR "cognitive impairment" Search modes - Find all my search terms Interface - EBSCOhost Research Databases Search Screen - Advanced Search Database – PsycINFO</p>	535303 hits
#6	<p>"distress syndrome" OR "drug dependence" OR "eating disorders" OR "fatigue" OR "headache" OR "insomnia" OR "major depression" OR "mental disease" OR "mental diseases" OR "mental health issues" OR "mental health problems" OR "mood disorder" OR "posttraumatic stress disorder" OR "psychological disorder" OR "psychological disorders" Search modes - Find all my search terms Interface - EBSCOhost Research Databases Search Screen - Advanced Search</p>	243741 hits

	Database – PsycINFO	
#7	"psychological factor" OR "psychological factors" OR "psychosis" OR "schizophrenia" OR "sleep disorder" OR "stress" OR "stress-related mental" OR "substance abuse" Search modes - Find all my search terms Interface - EBSCOhost Research Databases Search Screen - Advanced Search Database – PsycINFO	364873 hits
#8	DE "Attention Deficit Disorder with Hyperactivity" OR DE "Alcoholism" AND DE "Anxiety" OR DE "Anxiety Disorders" OR DE "Eating Disorders" OR DE "Behavior Disorders" OR DE "Bipolar Disorder" OR DE "Occupational Stress" OR DE "Chronic Mental Illness" OR DE "Cognitive Impairment" OR DE "Dementia" OR DE "Depression Emotion" OR DE "Learning Disorders" OR DE "Intellectual Development Disorder" OR DE "Cognitive Impairment" Search modes - Find all my search terms Interface - EBSCOhost Research Databases Search Screen - Advanced Search Database – PsycINFO	151586 hits
#9	DE "Distress" OR DE "Drug Dependency" OR DE "Eating Disorders" OR DE "Fatigue" OR DE "Headache" OR DE "Insomnia" OR DE "Major Depression" OR DE "Mental Disorders" OR DE "Migraine Headache" OR DE "Affective Disorders" OR DE "Posttraumatic Stress Disorder" Search modes - Find all my search terms Interface - EBSCOhost Research Databases Search Screen - Advanced Search Database - PsycINFO terms	228197 hits
#10	DE "Psychosis" OR DE "Schizophrenia" OR DE "Sleep Disorders" OR DE "Sleep Disorders" OR DE "Stress" OR DE "Acute Stress Disorder" OR DE "Chronic Stress" OR DE "Drug Abuse" OR DE "Autism" Find all my search terms EBSCOhost Research Databases Search Screen - Advanced Search Database – PsycINFO	187955 hits
#11	#5 OR #6 OR #7 OR #8 OR #9 OR #10 Search modes - Find all my search terms Interface - EBSCOhost Research Databases Search Screen - Advanced Search Database – PsycINFO	929374 hits
#12	#5 OR #6 OR #7 OR #8 OR #9 OR #10 AND #4 AND #11 Search modes - Find all my search terms Interface - EBSCOhost Research Databases Search Screen - Advanced Search Database – PsycINFO	1477 hits
#13	#5 OR #6 OR #7 OR #8 OR #9 OR #10 AND #4 AND #11 Limiters - Methodology: -Systematic Review, -Meta Analysis Search modes - Find all my search terms	15 hits

3. Database: PsycInfo/MD/RCT

Date: 2014-06-18

#1	<p>"disability pension" OR "long term sick" OR "long term sickness" OR "medical leave" OR "occupational disability" OR "occupational disabilities" OR "sick leave" OR "sick-listed employees" OR "sick-listed employee" OR "sickness absence" OR "sickness absent" Search modes - Find all my search terms - EBSCOhost Research Databases Search Screen - Advanced Search Database – PsycINFO</p>	1903 hits
#2	<p>"sickness absentee" OR "sickness absentees" OR "sickness absenteeism" OR "sickness certification" OR "sickness compensation" OR "work ability" OR "work capacity" OR "work disability" OR "work inability" OR "work incapacity" Search modes - Find all my search terms Interface - EBSCOhost Research Databases Search Screen - Advanced Search Database - PsycINFO Interface - EBSCOhost Research Databases Search Screen - Advanced Search Database – PsycINFO</p>	1530 hits
#3	<p>DE "Employee Leave Benefits" Search modes - Find all my search terms Interface - EBSCOhost Research Databases Search Screen - Advanced Search Database – PsycINFO</p>	693 hits
#4	<p>#1 OR #2 OR #3 Search modes - Find all my search terms Interface - EBSCOhost Research Databases Search Screen - Advanced Search Database – PsycINFO</p>	3518 hits
#5	<p>"adhd" OR "alcoholism" OR "anxiety" OR "anxiety disorder" OR "appetite disorders" OR "behavior disorder" OR "behavior disorders" OR "bipolar disorder" OR "bipolar disorders" OR "burnout" OR "chronic disease" OR "cognitive defect" OR "cognitive defects" OR "dementia" OR "depression" OR "learning disability" OR "mental retardation" OR "intellectual disability" OR "cognitive impairment" Search modes - Find all my search terms Interface - EBSCOhost Research Databases Search Screen - Advanced Search Database – PsycINFO</p>	535303 hits
#6	<p>"distress syndrome" OR "drug dependence" OR "eating disorders" OR "fatigue" OR "headache" OR "insomnia" OR "major depression" OR "mental disease" OR "mental diseases" OR "mental health issues" OR "mental health problems" OR "mood disorder" OR "posttraumatic stress disorder" OR "psychological disorder" OR "psychological disorders" Search modes - Find all my search terms Interface - EBSCOhost Research Databases Search Screen - Advanced Search</p>	243741 hits

	Database – PsycINFO	
#7	"psychological factor" OR "psychological factors" OR "psychosis" OR "schizophrenia" OR "sleep disorder" OR "stress" OR "stress-related mental" OR "substance abuse" Search modes - Find all my search terms Interface - EBSCOhost Research Databases Search Screen - Advanced Search Database – PsycINFO	364873 hits
#8	DE "Attention Deficit Disorder with Hyperactivity" OR DE "Alcoholism" AND DE "Anxiety" OR DE "Anxiety Disorders" OR DE "Eating Disorders" OR DE "Behavior Disorders" OR DE "Bipolar Disorder" OR DE "Occupational Stress" OR DE "Chronic Mental Illness" OR DE "Cognitive Impairment" OR DE "Dementia" OR DE "Depression Emotion" OR DE "Learning Disorders" OR DE "Intellectual Development Disorder" OR DE "Cognitive Impairment" Search modes - Find all my search terms Interface - EBSCOhost Research Databases Search Screen - Advanced Search Database – PsycINFO	151586 hits
#9	DE "Distress" OR DE "Drug Dependency" OR DE "Eating Disorders" OR DE "Fatigue" OR DE "Headache" OR DE "Insomnia" OR DE "Major Depression" OR DE "Mental Disorders" OR DE "Migraine Headache" OR DE "Affective Disorders" OR DE "Posttraumatic Stress Disorder" Search modes - Find all my search Interface - EBSCOhost Research Databases Search Screen - Advanced Search Database - PsycINFO terms	228197 hits
#10	DE "Psychosis" OR DE "Schizophrenia" OR DE "Sleep Disorders" OR DE "Sleep Disorders" OR DE "Stress" OR DE "Acute Stress Disorder" OR DE "Chronic Stress" OR DE "Drug Abuse" OR DE "Autism" Find all my search terms EBSCOhost Research Databases Search Screen - Advanced Search Database – PsycINFO	187955 hits
#11	#5 OR #6 OR #7 OR #8 OR #9 OR #10 Search modes - Find all my search terms Interface - EBSCOhost Research Databases Search Screen - Advanced Search Database – PsycINFO	929374 hits
#12	#5 OR #6 OR #7 OR #8 OR #9 OR #10 AND #4 AND #11 Search modes - Find all my search terms Interface - EBSCOhost Research Databases Search Screen - Advanced Search Database – PsycINFO	1477 hits
#13	#5 OR #6 OR #7 OR #8 OR #9 OR #10 AND #4 AND #11 AND "randomized controlled" OR rct OR "randomised controlled" OR "randomized, controlled" OR "randomised, controlled" Search modes - Find all my search terms Interface - EBSCOhost Research Databases	38 hits

	Search Screen - Advanced Search Database – PsycINFO	
#14	#5 OR #6 OR #7 OR #8 OR #9 OR #10 AND #4 AND #11 AND "randomized controlled" OR rct OR "randomised controlled" OR "randomized, controlled" OR "randomised, controlled" Limiters - Published Date: 20021101-20140831 Search modes - Find all my search terms Interface - EBSCOhost Research Databases Search Screen - Advanced Search Database – PsycINFO	35 hits



3. Database: PsycInfo /Cancer/ RCT

Date: 2014-06-18

#1	<p>"disability pension" OR "long term sick" OR "long term sickness" OR "medical leave" OR "occupational disability" OR "occupational disabilities" OR "sick leave" OR "sick-listed employees" OR "sick-listed employee" OR "sickness absence" OR "sickness absent" Search modes - Find all my search terms EBSCOhost Research Databases Search Screen - Advanced Search Database – PsycINFO</p>	1909 hits
#2	<p>"sickness absentee" OR "sickness absentees" OR "sickness absenteeism" OR "sickness certification" OR "sickness compensation" OR "work ability" OR "work capacity" OR "work disability" OR "work inability" OR "work incapacity" Search modes - Find all my search terms Interface - EBSCOhost Research Databases Search Screen - Advanced Search Database - PsycINFO Interface - EBSCOhost Research Databases Search Screen - Advanced Search Database – PsycINFO</p>	1530 hits
#3	<p>DE "Employee Leave Benefits" Search modes - Find all my search terms Interface - EBSCOhost Research Databases Search Screen - Advanced Search Database – PsycINFO</p>	693 hits
#4	<p>#1 OR #2 OR #3 Search modes - Find all my search terms Interface - EBSCOhost Research Databases Search Screen - Advanced Search Database – PsycINFO</p>	3524 hits
#5	<p>"acute leukemia" OR "bladder cancer" OR "bladder cancer" OR "bladder tumor" OR "brain cancer" OR "brain tumor" OR "breast cancer" OR "breast neoplasms" OR "breast tumor" OR "cancer" OR "central nervous system tumor" OR "chronic myeloid leukemia" OR "colon cancer" OR "colonic neoplasms" OR "colorectal cancer" OR "colorectal neoplasms" OR "digestive system cancer" Search modes - Find all my search terms Interface - EBSCOhost Research Databases Search Screen - Advanced Search Database – PsycINFO</p>	51406 hits
#6	<p>"esophagus tumor" OR "esophageal neoplasms" OR "hepatic cancer" OR "intestine cancer" OR "intestinal neoplasms" OR "kidney cancer" OR "kidney neoplasms" OR "leukemia" OR "liver cancer" OR "liver neoplasms" OR "lung cancer" OR "lung carcinoma" OR "lung neoplasms" OR "lymphatic leukemia" OR "lymphoid leukemia" OR "lymphoma" OR "meningioma" Search modes - Find all my search terms Interface - EBSCOhost Research Databases Search Screen - Advanced Search</p>	4207 hits

	Database – PsycINFO	
#7	"metastasis" OR "myeloid leukemia" OR "neoplasm" OR "neoplasms" OR "nonhodgkin lymphoma" OR "ovary cancer" OR "ovary tumor" OR "ovarian neoplasms" OR "ovarian cancer" OR "pancreas tumor" OR "pancreatic cancer" OR "pancreatic neoplasms" OR "prostate cancer" OR "prostate tumor" OR "prostatic cancer" OR "prostatic neoplasms" OR "stomach cancer" OR "stomach neoplasms" OR "gastric cancer" OR "gastric neoplasms" Search modes - Find all my search terms Interface - EBSCOhost Research Databases Search Screen - Advanced Search Database – PsycINFO	33686 hits
#8	"testis cancer" OR "testis tumor" OR "testicular cancer" OR "testicular neoplasms" OR "thyroid cancer" OR "thyroid neoplasms" OR "uterus cancer" OR "uterus tumor" OR "uterus neoplasms" OR "uterine neoplasms" OR "uterine cancer" Search modes - Find all my search terms Interface - EBSCOhost Research Databases Search Screen - Advanced Search Database – PsycINFO	286 hits
#9	DE "Neoplasms" OR DE "Benign Neoplasms" OR DE "Breast Neoplasms" OR DE "Endocrine Neoplasms" OR DE "Leukemias" OR DE "Nervous System Neoplasms" OR DE "Terminal Cancer" Search modes - Find all my search terms Interface - EBSCOhost Research Databases Search Screen - Advanced Search Database – PsycINFO	32567 hits
#10	#5 OR #6 OR #7 OR #8 OR #9 Search modes - Find all my search terms Interface - EBSCOhost Research Databases Search Screen - Advanced Search Database – PsycINFO	55213 hits
#11	#4 AND #10 Search modes - Find all my search terms Interface - EBSCOhost Research Databases Search Screen - Advanced Search Database – PsycINFO	75 hits
#12	"randomized controlled" OR rct OR "randomised controlled" OR "randomized, controlled" OR "randomised, controlled" Search modes - Find all my search terms Interface - EBSCOhost Research Databases Search Screen - Advanced Search Database – PsycINFO	19203 hits
#13	#11 AND #12 Search modes - Find all my search terms Interface - EBSCOhost Research Databases Search Screen - Advanced Search Database – PsycINFO	0 hits

3. Database: PsycInfo /Cancer/ Systematic Review/Meta-Analysis

Date: 2014-06-18

#1	"disability pension" OR "long term sick" OR "long term sickness" OR "medical leave" OR "occupational disability" OR "occupational disabilities" OR "sick leave" OR "sick-listed employees" OR "sick-listed employee" OR "sickness absence" OR "sickness absent" Search modes - Find all my search terms Interface - EBSCOhost Research Databases Search Screen - Advanced Search Database – PsycINFO	1909 hits
#2	"sickness absentee" OR "sickness absentees" OR "sickness absenteeism" OR "sickness certification" OR "sickness compensation" OR "work ability" OR "work capacity" OR "work disability" OR "work inability" OR "work incapacity" Search modes - Find all my search terms Interface - EBSCOhost Research Databases Search Screen - Advanced Search Database - PsycINFO Interface - EBSCOhost Research Databases Search Screen - Advanced Search Database – PsycINFO	1530 hits
#3	DE "Employee Leave Benefits" Search modes - Find all my search terms Interface - EBSCOhost Research Databases Search Screen - Advanced Search Database – PsycINFO	693 hits
#4	#1 OR #2 OR #3 Search modes - Find all my search terms Interface - EBSCOhost Research Databases Search Screen - Advanced Search Database – PsycINFO	3524 hits
#5	"acute leukemia" OR "bladder cancer" OR "bladder cancer" OR "bladder tumor" OR "brain cancer" OR "brain tumor" OR "breast cancer" OR "breast neoplasms" OR "breast tumor" OR "cancer" OR "central nervous system tumor" OR "chronic myeloid leukemia" OR "colon cancer" OR "colonic neoplasms" OR "colorectal cancer" OR "colorectal neoplasms" OR "digestive system cancer" Search modes - Find all my search terms Interface - EBSCOhost Research Databases Search Screen - Advanced Search Database – PsycINFO	51406 hits
#6	"esophagus tumor" OR "esophageal neoplasms" OR "hepatic cancer" OR "intestine cancer" OR "intestinal neoplasms" OR "kidney cancer" OR "kidney neoplasms" OR "leukemia" OR "liver cancer" OR "liver neoplasms" OR "lung cancer" OR "lung carcinoma" OR "lung neoplasms" OR "lymphatic leukemia" OR "lymphoid leukemia" OR "lymphoma" OR "meningioma" Search modes - Find all my search terms Interface - EBSCOhost Research Databases	4207 hits

	Search Screen - Advanced Search	
#7	"metastasis" OR "myeloid leukemia" OR "neoplasm" OR "neoplasms" OR "nonhodgkin lymphoma" OR "ovary cancer" OR "ovary tumor" OR "ovarian neoplasms" OR "ovarian cancer" OR "pancreas tumor" OR "pancreatic cancer" OR "pancreatic neoplasms" OR "prostate cancer" OR "prostate tumor" OR "prostatic cancer" OR "prostatic neoplasms" OR "stomach cancer" OR "stomach neoplasms" OR "gastric cancer" OR "gastric neoplasms" Search modes - Find all my search terms Interface - EBSCOhost Research Databases Search Screen - Advanced Search Database – PsycINFO	33686 hits
#8	"testis cancer" OR "testis tumor" OR "testicular cancer" OR "testicular neoplasms" OR "thyroid cancer" OR "thyroid neoplasms" OR "uterus cancer" OR "uterus tumor" OR "uterus neoplasms" OR "uterine neoplasms" OR "uterine cancer" Search modes - Find all my search terms Interface - EBSCOhost Research Databases Search Screen - Advanced Search Database – PsycINFO	286 hits
#9	DE "Neoplasms" OR DE "Benign Neoplasms" OR DE "Breast Neoplasms" OR DE "Endocrine Neoplasms" OR DE "Leukemias" OR DE "Nervous System Neoplasms" OR DE "Terminal Cancer" Search modes - Find all my search terms Interface - EBSCOhost Research Databases Search Screen - Advanced Search Database – PsycINFO	32567 hits
#10	#5 OR #6 OR #7 OR #8 OR #9 Search modes - Find all my search terms Interface - EBSCOhost Research Databases Search Screen - Advanced Search Database – PsycINFO	55213 hits
#11	#4 AND #10 Search modes - Find all my search terms Interface - EBSCOhost Research Databases Search Screen - Advanced Search Database – PsycINFO	75 hits
#12	#11 AND Limiters - Methodology: -Systematic Review, -Meta Analysis Search modes - Find all my search terms	3 hits

3. Database: PsycInfo /MSD/ Systematic Review/Meta-Analysis

Date: 2014-06-18

#1	"disability pension" OR "long term sick" OR "long term sickness" OR "medical leave" OR "occupational disability" OR "occupational disabilities" OR "sick leave" OR "sick-listed employees" OR "sick-listed employee" OR "sickness absence" OR "sickness absent" Search modes - Find all my search terms Interface - EBSCOhost Research Databases Search Screen - Advanced Search Database – PsycINFO	1909 hits
#2	"sickness absentee" OR "sickness absentees" OR "sickness absenteeism" OR "sickness certification" OR "sickness compensation" OR "work ability" OR "work capacity" OR "work disability" OR "work inability" OR "work incapacity" Search modes - Find all my search terms Interface - EBSCOhost Research Databases Search Screen - Advanced Search Database - PsycINFO Interface - EBSCOhost Research Databases Search Screen - Advanced Search Database – PsycINFO	1530 hits
#3	DE "Employee Leave Benefits" Search modes - Find all my search terms	693 hits
#4	#1 OR #2 OR #3 Search modes - Find all my search terms Interface - EBSCOhost Research Databases Search Screen - Advanced Search Database – PsycINFO	3524 hits
#5	"arthralgia" OR "arthritis" OR "back pain" OR "backache" OR "bone injury" OR "bone injuries" OR "carpal tunnel syndrome" OR "chronic pain" OR "epicondylitis" OR "fibromyalgia" OR "knee osteoarthritis" OR "lbp" OR "lower back pain" OR "musculoskeletal diseases" OR "musculoskeletal disorders" OR "musculoskeletal pain" Search modes - Find all my search terms Interface - EBSCOhost Research Databases Search Screen - Advanced Search Database – PsycINFO	23633 hits
#6	"neck pain" OR "osteoarthritis" OR "osteoporosis" OR "rheumatic diseases" OR "rheumatoid arthritis" OR "spinal cord injuries" OR "spinal cord inflammation" OR "rheumatic disease" OR "spinal cord injury" Search modes - Find all my search terms Interface - EBSCOhost Research Databases Search Screen - Advanced Search Database – PsycINFO	9893 hits
#7	DE "Arthritis" OR DE "Rheumatoid Arthritis" OR DE "Back Pain" OR DE "Chronic Pain" OR DE "Fibromyalgia" OR DE "Osteoporosis" OR DE "Musculoskeletal Disorders" OR DE "Bone Disorders" OR DE "Joint Disorders" OR DE "Muscular Disorders" OR DE "Spinal Cord Injuries"	23496 hits

	Search modes - Find all my search terms Interface - EBSCOhost Research Databases Search Screen - Advanced Search Database – PsycINFO	
#8	#5 OR #6 OR #7 Search modes - Find all my search terms Interface - EBSCOhost Research Databases Search Screen - Advanced Search Database – PsycINFO	32204 hits
#9	#4 AND #8 Search modes - Find all my search terms Interface - EBSCOhost Research Databases Search Screen - Advanced Search Database – PsycINFO	497 hits
#10	#4 AND #8 Limiters - Publication Year: 2002-2014 Search modes - Find all my search terms Interface - EBSCOhost Research Databases Search Screen - Advanced Search Database – PsycINFO	390 hits
#11	#4 AND #8 Limiters - Publication Year: 2002-2012; Methodology: - Systematic Review, -Meta Analysis Search modes - Find all my search terms Interface - EBSCOhost Research Databases Search Screen - Advanced Search Database – PsycINFO	10 hits

3. Database: PsycInfo/MSD/RCT

Date: 2014-06-18

#1	"disability pension" OR "long term sick" OR "long term sickness" OR "medical leave" OR "occupational disability" OR "occupational disabilities" OR "sick leave" OR "sick-listed employees" OR "sick-listed employee" OR "sickness absence" OR "sickness absent" Search modes - Find all my search terms Interface - EBSCOhost Research Databases Search Screen - Advanced Search Database – PsycINFO	1909 hits
#2	"sickness absentee" OR "sickness absentees" OR "sickness absenteeism" OR "sickness certification" OR "sickness compensation" OR "work ability" OR "work capacity" OR "work disability" OR "work inability" OR "work incapacity" Search modes - Find all my search terms Interface - EBSCOhost Research Databases Search Screen - Advanced Search Database - PsycINFO Interface - EBSCOhost Research Databases Search Screen - Advanced Search Database – PsycINFO	1530 hits
#3	DE "Employee Leave Benefits" Search modes - Find all my search terms	693 hits
#4	#1 OR #2 OR #3 Search modes - Find all my search terms Interface - EBSCOhost Research Databases Search Screen - Advanced Search Database – PsycINFO	3524 hits
#5	"arthralgia" OR "arthritis" OR "back pain" OR "backache" OR "bone injury" OR "bone injuries" OR "carpal tunnel syndrome" OR "chronic pain" OR "epicondylitis" OR "fibromyalgia" OR "knee osteoarthritis" OR "lbp" OR "lower back pain" OR "musculoskeletal diseases" OR "musculoskeletal disorders" OR "musculoskeletal pain" Search modes - Find all my search terms Interface - EBSCOhost Research Databases Search Screen - Advanced Search Database – PsycINFO	23633 hits
#6	"neck pain" OR "osteoarthritis" OR "osteoporosis" OR "rheumatic diseases" OR "rheumatoid arthritis" OR "spinal cord injuries" OR "spinal cord inflammation" OR "rheumatic disease" OR "spinal cord injury" Search modes - Find all my search terms Interface - EBSCOhost Research Databases Search Screen - Advanced Search Database – PsycINFO	9893 hits
#7	DE "Arthritis" OR DE "Rheumatoid Arthritis" OR DE "Back Pain" OR DE "Chronic Pain" OR DE "Fibromyalgia" OR DE "Osteoporosis" OR DE "Musculoskeletal Disorders" OR DE "Bone Disorders" OR DE "Joint Disorders" OR DE "Muscular Disorders" OR DE "Spinal Cord Injuries"	23496 hits

	Search modes - Find all my search terms Interface - EBSCOhost Research Databases Search Screen - Advanced Search Database – PsycINFO	
#8	#5 OR #6 OR #7 Search modes - Find all my search terms Interface - EBSCOhost Research Databases Search Screen - Advanced Search Database – PsycINFO	32204 hits
#9	#4 AND #8 Search modes - Find all my search terms Interface - EBSCOhost Research Databases Search Screen - Advanced Search Database – PsycINFO	497 hits
#10	#4 AND #8 Limiters - Publication Year: 2002-2014 Search modes - Find all my search terms Interface - EBSCOhost Research Databases Search Screen - Advanced Search Database – PsycINFO	390 hits
#11	#4 AND #8 "randomized controlled" OR rct OR "randomised controlled" OR "randomized, controlled" OR "randomised, controlled" Search modes - Find all my search terms Interface - EBSCOhost Research Databases Search Screen - Advanced Search Database – PsycINFO	25 hits



4. Database: AMED/MSD/Systematic Reviews/Meta-analysis/RCT

Date: 2014-06-19

#1	<p>“Disability pension” OR “Long term sick leave” OR “Long-term sickness absence” OR “Long-term sickness absentees” OR “Medical leave” OR “Occupational disability” OR “Sick leave more than 14 days/ two weeks” OR “Sick-leave” OR “Sick-listed employees” OR “Sickness absence” OR “Sickness absent” OR “Sickness absentee” OR “Sickness certification” OR “Sickness compensation” OR “Work ability” OR “Work capacity” OR “Work disability” OR “Work inability” OR “Work incapacity” OR “sickness absenteeism” OR “occupational disabilities” OR “insurance disability” Search modes - Find all my search terms Interface</p> <p>Limit 20021101-20141231, Interface - EBSCOhost Research Databases Search Screen - Advanced Search Database - AMED - The Allied and Complementary Medicine Database</p>	670 hits
#2	<p>DE "SICK LEAVE" Search modes - Find all my search terms Interface</p> <p>Limit 20021101-20141231, Interface - EBSCOhost Research Databases Search Screen - Advanced Search Database - AMED - The Allied and Complementary Medicine Database</p>	106 hits
#3	<p>DE "WORK CAPACITY EVALUATION" OR DE "WORKLOAD" Search modes - Find all my search terms Interface</p> <p>Limit 20021101-20141231, Interface - EBSCOhost Research Databases Search Screen - Advanced Search Database - AMED - The Allied and Complementary Medicine Database</p>	263 hits
#4	<p>#1 OR #2 OR #3 Search modes - Find all my search terms Interface</p> <p>Limit 20021101-20141231, Interface - EBSCOhost Research Databases Search Screen - Advanced Search Database - AMED - The Allied and Complementary Medicine Database</p>	754 hits
#5	<p>Arthralgia OR arthritis OR “back pain” OR backache OR “bone injuries” OR “carpal tunnel syndrome” OR “chronic pain” OR epicondylitis OR fibromyalgia OR “knee osteoarthritis” OR “low back pain (LBP)” OR “lower back pain” OR “musculoskeletal diseases” OR “musculoskeletal disorders” OR “musculoskeletal pain” OR “neck pain” OR “osteoarthritis” OR “osteoporosis” OR “rheumatic disease” OR “rheumatoid arthritis” OR “spinal cord injuries” OR “Bone injury” OR “spinal cord injury” OR “spinal cord inflammation” OR “rheumatic diseases” Limit 20021101-20141231, Field optional, apply related words,</p> <p>Interface - EBSCOhost Research Databases Search Screen - Advanced Search Database - AMED - The Allied and Complementary Medicine Database</p>	11672 hits

#6	DE "Arthritis" OR DE "Rheumatoid Arthritis" OR DE "Back Pain" OR DE "Chronic Pain" OR DE "Fibromyalgia" OR DE "Osteoporosis" OR DE "Musculoskeletal Disorders" OR DE "Bone Disorders" OR DE "Joint Disorders" OR DE "Muscular Disorders" OR DE "Spinal Cord Injuries", " Limit 20021101-20141231 Interface - EBSCOhost Research Databases Search Screen - Advanced Search Database - AMED - The Allied and Complementary Medicine Database	3663 hits
#7	#5 OR #6 Search modes - " Limit 20021101-20141231, Interface - EBSCOhost Research Databases Search Screen - Advanced Search Database - AMED - The Allied and Complementary Medicine Database	11863 hits
#9	#7 AND #4 - Limit 20021101-20141231, Interface - EBSCOhost Research Databases Search Screen - Advanced Search Database - AMED - The Allied and Complementary Medicine Database	266 hits
#10	"systematic reviews OR "systematic review" AND #9 Limit 20021101-20141231, Interface - EBSCOhost Research Databases Search Screen - Advanced Search Database - AMED - The Allied and Complementary Medicine Database	16 hits
#11	"meta-analysis" AND #9 Limit 20021101-20141231, Interface - EBSCOhost Research Databases Search Screen - Advanced Search Database - AMED - The Allied and Complementary Medicine Database	4 hits
#12	"randomized controlled" OR rct OR "randomised controlled" OR "randomized, controlled" OR "randomised, controlled" AND #9 Limit 20021101-20141231, Interface - EBSCOhost Research Databases Search Screen - Advanced Search Database - AMED - The Allied and Complementary Medicine Database	22 hits

4. Database: AMED/MD/Systematic Reviews/Meta-Analysis/RCT

Date: 2014-06-19

#1	<p>“Disability pension” OR “Long term sick leave” OR “Long-term sickness absence” OR “Long-term sickness absentees” OR “Medical leave” OR “Occupational disability” OR “Sick leave more than 14 days/ two weeks” OR “Sick-leave” OR “Sick-listed employees” OR “Sickness absence” OR “Sickness absent” OR “Sickness absentee” OR “Sickness certification” OR “Sickness compensation” OR “Work ability” OR “Work capacity” OR “Work disability” OR “Work inability” OR “Work incapacity” OR “sickness absenteeism” OR “occupational disabilities” OR “insurance disability” Search modes - Find all my search terms Interface Limit 20021101-20141231, Interface - EBSCOhost Research Databases Search Screen - Advanced Search Database - AMED - The Allied and Complementary Medicine Database</p>	670 hits
#2	<p>DE "SICK LEAVE" Search modes - Find all my search terms Interface Limit 20021101-20141231, Interface - EBSCOhost Research Databases Search Screen - Advanced Search Database - AMED - The Allied and Complementary Medicine Database</p>	106 hits
#3	<p>DE "WORK CAPACITY EVALUATION" OR DE "WORKLOAD" Search modes - Find all my search terms Interface Limit 20021101-20141231, Interface - EBSCOhost Research Databases Search Screen - Advanced Search Database - AMED - The Allied and Complementary Medicine Database</p>	263 hits
#4	<p>#1 OR #2 OR #3 Search modes - Find all my search terms Interface Limit 20021101-20141231, Interface - EBSCOhost Research Databases Search Screen - Advanced Search Database - AMED - The Allied and Complementary Medicine Database</p>	754 hits
#5	<p>Adhd OR alcoholism OR anxiety OR “anxiety disorder” OR “appetite disorders” OR “behavior disorders” OR “bipolar disorders” OR burnout OR “chronic disease” OR “cognitive defect” OR dementia OR depression OR disability OR “distress syndrome” OR “drug dependence” OR “eating disorders” OR fatigue OR headache OR insomnia OR “major depression” OR “mental disease” OR “mental health issues” OR “mental health problems” OR “mood disorder” OR “posttraumatic stress disorder” OR “psychological disorders” OR “psychological factors” OR psychosis OR schizophrenia OR “sleep disorder” OR stress OR “stress-related mental disorders” OR “substance abuse” OR autism OR migraine Limit 20021101-20141231, Field optional, apply related words, Interface - EBSCOhost Research Databases Search Screen - Advanced Search Database - AMED - The Allied and Complementary Medicine Database</p>	26849 hits
#6	<p>DE "Attention Deficit Disorder with Hyperactivity" OR DE "Alcoholism"</p>	2672hits

	AND DE "Anxiety" OR DE "Anxiety Disorders" OR DE "Eating Disorders" OR DE "Behavior Disorders "OR DE "Bipolar Disorder" OR DE "Occupational Stress" OR DE "Chronic Mental Illness" OR DE "Cognitive Impairment" OR DE "Dementia" OR DE "Depression Emotion" OR DE "Learning Disorders" OR DE "Intellectual Development Disorder" OR DE "Cognitive Impairment" " Limit 20021101-20141231, Interface - EBSCOhost Research Databases Search Screen - Advanced Search Database - AMED - The Allied and Complementary Medicine Database	
#7	DE "Distress" OR DE "Drug Dependency" OR DE "Eating Disorders" OR DE "Fatigue" OR DE "Headache" OR DE "Insomnia" OR DE "Major Depression" OR DE "Mental Disorders" OR DE "Migraine Headache" OR DE "Affective Disorders" OR DE "Posttraumatic Stress Disorder" Limit 20021101-20141231, Interface - EBSCOhost Research Databases Search Screen - Advanced Search Database - AMED - The Allied and Complementary Medicine Database	3032 hits
#8	DE "Psychosis" OR DE "Schizophrenia" OR DE "Sleep Disorders" OR DE "Sleep Disorders" OR DE "Stress" OR DE "Acute Stress Disorder" OR DE "Chronic Stress" OR DE "Drug Abuse" OR DE "Autism" Limit 20021101-20141231, Interface - EBSCOhost Research Databases Search Screen - Advanced Search Database - AMED - The Allied and Complementary Medicine Database	813 hits
#9	#5 OR #6 OR #7 OR #8 Search modes - " Limit 20021101-20141231, Interface - EBSCOhost Research Databases Search Screen - Advanced Search Database - AMED - The Allied and Complementary Medicine Database	28897 hits
#10	#4 AND #9 Search modes - " Limit 20021101-20141231, Interface - EBSCOhost Research Databases Search Screen - Advanced Search Database - AMED - The Allied and Complementary Medicine Database	398 hits
#11	"systematic reviews OR "systematic review" AND #10 Limit 20021101-20141231, Interface - EBSCOhost Research Databases Search Screen - Advanced Search Database - AMED - The Allied and Complementary Medicine Database	14 hits
#12	"meta-analysis" AND #10 Limit 20021101-20141231, Interface - EBSCOhost Research Databases Search Screen - Advanced Search Database - AMED - The Allied and Complementary Medicine Database	2 hits
#13	"randomized controlled" OR rct OR "randomised controlled" OR "randomized, controlled" OR "randomised, controlled" AND #10 Limit 20021101-20141231, Interface - EBSCOhost Research Databases Search Screen - Advanced Search	18 hits

	Database - AMED - The Allied and Complementary Medicine Database	
--	--	--

4. Database: AMED/Cancer/Systematic Reviews/Meta-analysis/RCT

Date: 2014-06-19

#1	<p>“Disability pension” OR “Long term sick leave” OR “Long-term sickness absence” OR “Long-term sickness absentees” OR “Medical leave” OR “Occupational disability” OR “Sick leave more than 14 days/ two weeks” OR “Sick-leave” OR “Sick-listed employees” OR “Sickness absence” OR “Sickness absent” OR “Sickness absentee” OR “Sickness certification” OR “Sickness compensation” OR “Work ability” OR “Work capacity” OR “Work disability” OR “Work inability” OR “Work incapacity” OR “sickness absenteeism” OR “occupational disabilities” OR “insurance disability” Search modes - Find all my search terms Interface</p> <p>Limit 20021101-20141231, Interface - EBSCOhost Research Databases Search Screen - Advanced Search Database - AMED - The Allied and Complementary Medicine Database</p>	670 hits
#2	<p>DE "SICK LEAVE" Search modes - Find all my search terms Interface</p> <p>Limit 20021101-20141231, Interface - EBSCOhost Research Databases Search Screen - Advanced Search Database - AMED - The Allied and Complementary Medicine Database</p>	106 hits
#3	<p>DE "WORK CAPACITY EVALUATION" OR DE "WORKLOAD" Search modes - Find all my search terms Interface</p> <p>Limit 20021101-20141231, Interface - EBSCOhost Research Databases Search Screen - Advanced Search Database - AMED - The Allied and Complementary Medicine Database</p>	263 hits
#4	<p>#1 OR #2 OR #3 Search modes - Find all my search terms Interface</p> <p>Limit 20021101-20141231, Interface - EBSCOhost Research Databases Search Screen - Advanced Search Database - AMED - The Allied and Complementary Medicine Database</p>	754 hits
#5	<p>“acute leukemia” OR “bladder cancer” OR “bladder tumor” OR “brain cancer” OR “brain tumor” OR “breast cancer” OR “breast neoplasms” OR “breast tumor” OR cancer OR “central nervous system tumor” OR “chronic myeloid leukemia” OR “colon cancer” OR “colonic neoplasms” OR “colorectal cancer” OR “colorectal neoplasms” OR “digestive system cancer” OR “esophagus tumor” OR “esophageal neoplasms” OR “hepatic cancer” OR “intestine cancer” OR “intestinal neoplasms” OR “kidney cancer” OR “kidney neoplasms” OR “leukemia” OR “liver cancer” OR “liver neoplasms” OR “lung cancer” OR “lung carcinoma” OR “lung neoplasms” OR “lymphatic leukemia” OR “lymphoid leukemia” OR lymphoma OR meningioma OR metastasis OR “myeloid leukemia” OR neoplasm OR neoplasms OR “nonhodgkin lymphoma” OR “ovary cancer” OR “ovary tumor” OR “ovarian neoplasms” OR “ovarian cancer” OR “pancreas tumor” OR “pancreatic cancer” OR “pancreatic neoplasms” OR</p>	8840 hits

	<p>“prostate cancer” OR “prostate tumor” OR “prostatic cancer” OR “prostatic neoplasms” OR “stomach cancer” OR “stomach neoplasms” OR “gastric cancer” OR “gastric neoplasms” OR “testis cancer” OR “testis tumor” OR “testicular cancer” OR “testicular neoplasms” OR “thyroid cancer” OR “thyroid neoplasms” OR “uterus cancer” OR “uterus tumor”</p> <p>Limit 20021101-20141231, Interface - EBSCOhost Research Databases</p> <p>Search Screen - Advanced Search</p> <p>Database - AMED - The Allied and Complementary Medicine Database</p> <p>OR “uterus neoplasms” OR “uterine neoplasms” OR “uterine cancer”</p>	
#6	<p>DE "Neoplasms" OR DE "Benign Neoplasms" OR DE "Breast Neoplasms" OR DE "Endocrine Neoplasms" OR DE "Leukemias" OR DE "Nervous System Neoplasms" OR DE "Terminal Cancer" Limit 20021101-20141231, Interface - EBSCOhost Research Databases</p> <p>Search Screen - Advanced Search</p> <p>Database - AMED - The Allied and Complementary Medicine Database</p>	4392 hits
#7	<p>#5 OR #6 Limit 20021101-20141231, Interface - EBSCOhost Research Databases</p> <p>Search Screen - Advanced Search</p> <p>Database - AMED - The Allied and Complementary Medicine Database</p>	8840 hits
#8	<p>#7 AND #4 Limit 20021101-20141231, Interface - EBSCOhost Research Databases</p> <p>Search Screen - Advanced Search</p> <p>Database - AMED - The Allied and Complementary Medicine Database</p>	12 hits
#9	<p>#8 AND “systematic reviews OR “systematic review” Limit 20021101-20141231, Interface - EBSCOhost Research Databases</p> <p>Search Screen - Advanced Search</p> <p>Database - AMED - The Allied and Complementary Medicine Database</p>	0 hits
#10	<p>#8 AND “meta-analysis” Limit 20021101-20141231, Interface - EBSCOhost Research Databases</p> <p>Search Screen - Advanced Search</p> <p>Database - AMED - The Allied and Complementary Medicine Database</p>	0 hits
#11	<p>#8 AND "randomized controlled" OR rct OR "randomised controlled" OR "randomized, controlled" OR "randomised, controlled" Limit 20021101-20141231, Interface - EBSCOhost Research Databases</p> <p>Search Screen - Advanced Search</p> <p>Database - AMED - The Allied and Complementary Medicine Database</p>	0 hits

5. Database: CINAHL PLUS/Cancer/Systematic Reviews/Meta-analysis/RCT  
 Date: 2014-06-19

#1	<p>“Disability pension” OR “Long term sick leave” OR “Long-term sickness absence” OR “Long-term sickness absentees” OR “Medical leave” OR “Occupational disability” OR “Sick leave more than 14 days/ two weeks” OR “Sick-leave” OR “Sick-listed employees” OR “Sickness absence” OR “Sickness absent” OR “Sickness absentee” OR “Sickness certification” OR “Sickness compensation” OR “Work ability” OR “Work capacity” OR “Work disability” OR “Work inability” OR “Work incapacity” OR “sickness absenteeism” OR “occupational disabilities” OR “insurance disability” Search modes - Find all my search terms Interface Limiters - Published Date: 20021101-20141231                  Search modes - Find all my search terms Interface - EBSCOhost Research Databases                  Search Screen - Advanced Search                  Database - CINAHL Plus</p>	5822 hits
#2	<p>DE "SICK LEAVE" Search modes - Find all my search terms Interface                  Search modes - Find all my search terms Interface Limiters - Published Date: 20021101-20141231                  Search modes - Find all my search terms Interface - EBSCOhost Research Databases                  Search Screen - Advanced Search                  Database - CINAHL Plus</p>	2928 hits
#3	<p>DE "WORK CAPACITY EVALUATION" OR DE "WORKLOAD" Search modes - Find all my search terms Interface                  Search modes - Find all my search terms Interface Limiters - Published Date: 20021101-20141231                  Search modes - Find all my search terms Interface - EBSCOhost Research Databases                  Search Screen - Advanced Search                  Database - CINAHL Plus</p>	9124 hits
#4	<p>#1 OR #2 OR #3 Search modes - Find all my search terms Interface                  Search modes - Find all my search terms Interface Limiters - Published Date: 20021101-20141231                  Search modes - Find all my search terms Interface - EBSCOhost Research Databases                  Search Screen - Advanced Search                  Database - CINAHL Plus</p>	14154 hits
#5	<p>“acute leukemia” OR “bladder cancer” OR “bladder tumor” OR “brain cancer” OR “brain tumor” OR “breast cancer” OR “breast neoplasms” OR “breast tumor” OR cancer OR “central nervous system tumor” OR “chronic myeloid leukemia” OR “colon cancer” OR “colonic neoplasms”</p>	264093 hits



	<p>OR "colorectal cancer" OR "colorectal neoplasms" OR "digestive system cancer" OR "esophagus tumor" OR "esophageal neoplasms" OR "hepatic cancer" OR "intestine cancer" OR "intestinal neoplasms" OR "kidney cancer" OR "kidney neoplasms" OR "leukemia" OR "liver cancer" OR "liver neoplasms" OR "lung cancer" OR "lung carcinoma" OR "lung neoplasms" OR "lymphatic leukemia" OR "lymphoid leukemia" OR lymphoma OR meningioma OR metastasis OR "myeloid leukemia" OR neoplasm OR neoplasms OR "nonhodgkin lymphoma" OR "ovary cancer" OR "ovary tumor" OR "ovarian neoplasms" OR "ovarian cancer" OR "pancreas tumor" OR "pancreatic cancer" OR "pancreatic neoplasms" OR "prostate cancer" OR "prostate tumor" OR "prostatic cancer" OR "prostatic neoplasms" OR "stomach cancer" OR "stomach neoplasms" OR "gastric cancer" OR "gastric neoplasms" OR "testis cancer" OR "testis tumor" OR "testicular cancer" OR "testicular neoplasms" OR "thyroid cancer" OR "thyroid neoplasms" OR "uterus cancer" OR "uterus tumor"</p> <p>Search modes - Find all my search terms Interface Limiters - Published Date: 20021101-20141231</p> <p>Search modes - Find all my search terms Interface - EBSCOhost Research Databases</p> <p>Search Screen - Advanced Search</p> <p>Database - CINAHL Plus</p>	
#6	<p>DE "Neoplasms" OR DE "Benign Neoplasms" OR DE "Breast Neoplasms" OR DE "Endocrine Neoplasms" OR DE "Leukemias" OR DE "Nervous System Neoplasms" OR DE "Terminal Cancer" Search modes - Find all my search terms Interface Limiters - Published Date: 20021101-20141231</p> <p>Search modes - Find all my search terms Interface - EBSCOhost Research Databases</p> <p>Search Screen - Advanced Search</p> <p>Database - CINAHL Plus</p>	80700 hits
#7	<p>#5 OR #6 Limit 20021101-20141231, Search modes - Find all my search terms Interface Limiters - Published Date: 20021101-20141231</p> <p>Search modes - Find all my search terms Interface - EBSCOhost Research Databases</p> <p>Search Screen - Advanced Search</p> <p>Database - CINAHL Plus</p>	264093hits
#8	<p>#7 AND #4 Limit 20021101-20141231 Search modes - Find all my search terms Interface Limiters - Published Date: 20021101-20141231</p> <p>Search modes - Find all my search terms Interface - EBSCOhost Research Databases</p> <p>Search Screen - Advanced Search</p> <p>Database - CINAHL Plus</p>	436 hits
#9	<p>#8 AND "systematic reviews OR "systematic review" Search modes - Find all my search terms Interface Limiters - Published Date: 20021101-</p>	3hits

	20141231 Search modes - Find all my search terms Interface - EBSCOhost Research Databases Search Screen - Advanced Search Database - CINAHL Plus	
#10	#8 AND "meta-analysis" Search modes - Find all my search terms Interface Limiters - Published Date: 20021101-20141231 Search modes - Find all my search terms Interface - EBSCOhost Research Databases Search Screen - Advanced Search Database - CINAHL Plus	1 hits
#11	#8 AND "randomized controlled" OR rct OR "randomised controlled" OR "randomized, controlled" OR "randomised, controlled" Search modes - Find all my search terms InterfaceLimiters - Published Date: 20021101- 20141231 Search modes - Find all my search terms Interface - EBSCOhost Research Databases Search Screen - Advanced Search Database - CINAHL Plus	8 hits

5. Database: CINAHL PLUS/MSD/Systematic Reviews/Meta-analysis/RCT  
 Date: 2014-06-19

#1	<p>“Disability pension” OR “Long term sick leave” OR “Long-term sickness absence” OR “Long-term sickness absentees” OR “Medical leave” OR “Occupational disability” OR “Sick leave more than 14 days/ two weeks” OR “Sick-leave” OR “Sick-listed employees” OR “Sickness absence” OR “Sickness absent” OR “Sickness absentee” OR “Sickness certification” OR “Sickness compensation” OR “Work ability” OR “Work capacity” OR “Work disability” OR “Work inability” OR “Work incapacity” OR “sickness absenteeism” OR “occupational disabilities” OR “insurance disability” Search modes - Find all my search terms Interface Limiters - Published Date: 20021101-20141231                  Search modes - Find all my search terms Interface - EBSCOhost Research Databases                  Search Screen - Advanced Search                  Database - CINAHL Plus</p>	5822 hits
#2	<p>DE "SICK LEAVE" Search modes - Find all my search terms Interface Search modes - Find all my search terms Interface Limiters - Published Date: 20021101-20141231                  Search modes - Find all my search terms Interface - EBSCOhost Research Databases                  Search Screen - Advanced Search                  Database - CINAHL Plus</p>	2928 hits
#3	<p>DE "WORK CAPACITY EVALUATION" OR DE "WORKLOAD" Search modes - Find all my search terms Interface Search modes - Find all my search terms Interface Limiters - Published Date: 20021101-20141231                  Search modes - Find all my search terms Interface - EBSCOhost Research Databases                  Search Screen - Advanced Search                  Database - CINAHL Plus</p>	9124 hits
#4	<p>#1 OR #2 OR #3 Search modes - Find all my search terms Interface Search modes - Find all my search terms Interface Limiters - Published Date: 20021101-20141231                  Search modes - Find all my search terms Interface - EBSCOhost Research Databases                  Search Screen - Advanced Search                  Database - CINAHL Plus</p>	14154 hits
#5	<p>Arthralgia OR arthritis OR “back pain” OR backache OR “bone injuries” OR “carpal tunnel syndrome” OR “chronic pain” OR epicondylitis OR fibromyalgia OR “knee osteoarthritis” OR “low back pain (LBP)” OR “lower back pain” OR “musculoskeletal diseases” OR “musculoskeletal disorders” OR “musculoskeletal pain” OR “neck pain” OR “osteoarthritis” OR “osteoporosis” OR “rheumatic disease” OR</p>	99039hits

	<p>“rheumatoid arthritis” OR “spinal cord injuries” OR “Bone injury” OR “spinal cord injury” OR “spinal cord inflammation” OR “rheumatic diseases” Search modes - Find all my search terms Interface Limiters - Published Date: 20021101-20141231</p> <p>Search modes - Find all my search terms Interface - EBSCOhost Research Databases</p> <p>Search Screen - Advanced Search</p> <p>Database - CINAHL Plus</p>	
#6	<p>DE "Arthritis" OR DE "Rheumatoid Arthritis" OR DE "Back Pain" OR DE "Chronic Pain" OR DE "Fibromyalgia" OR DE "Osteoporosis" OR DE "Musculoskeletal Disorders" OR DE "Bone Disorders" OR DE "Joint Disorders" OR DE "Muscular Disorders" OR DE "Spinal Cord Injuries" Search modes - Find all my search terms Interface Limiters - Published Date: 20021101-20141231</p> <p>Search modes - Find all my search terms Interface - EBSCOhost Research Databases</p> <p>Search Screen - Advanced Search</p> <p>Database - CINAHL Plus</p>	44676 hits
#7	<p>#5 OR #6 Limit 20021101-20141231, Search modes - Find all my search terms Interface Limiters - Published Date: 20021101-20141231</p> <p>Search modes - Find all my search terms Interface - EBSCOhost Research Databases</p> <p>Search Screen - Advanced Search</p> <p>Database - CINAHL Plus</p>	99039 hits
#8	<p>#7 AND #4 Limit 20021101-20141231 Search modes - Find all my search terms Interface Limiters - Published Date: 20021101-20141231</p> <p>Search modes - Find all my search terms Interface - EBSCOhost Research Databases</p> <p>Search Screen - Advanced Search</p> <p>Database - CINAHL Plus</p>	1106 hits
#9	<p>#8 AND “systematic reviews OR “systematic review” Search modes - Find all my search terms Interface Limiters - Published Date: 20021101-20141231</p> <p>Search modes - Find all my search terms Interface - EBSCOhost Research Databases</p> <p>Search Screen - Advanced Search</p> <p>Database - CINAHL Plus</p>	57 hits
#10	<p>#8 AND “meta-analysis” Search modes - Find all my search terms Interface Limiters - Published Date: 20021101-20141231</p> <p>Search modes - Find all my search terms Interface - EBSCOhost Research Databases</p> <p>Search Screen - Advanced Search</p> <p>Database - CINAHL Plus</p>	21 hits

#11	#8 AND "randomized controlled" OR rct OR "randomised controlled" OR "randomized, controlled" OR "randomised, controlled" Search modes - Find all my search terms InterfaceLimiters - Published Date: 20021101-20141231 Search modes - Find all my search terms Interface - EBSCOhost Research Databases Search Screen - Advanced Search Database - CINAHL Plus	107 hits
-----	--	----------

5. Database: CINAHL PLUS/MD/Systematic Reviews/Meta-analysis/RCT  
 Date: 2014-06-19

#1	<p>“Disability pension” OR “Long term sick leave” OR “Long-term sickness absence” OR “Long-term sickness absentees” OR “Medical leave” OR “Occupational disability” OR “Sick leave more than 14 days/ two weeks” OR “Sick-leave” OR “Sick-listed employees” OR “Sickness absence” OR “Sickness absent” OR “Sickness absentee” OR “Sickness certification” OR “Sickness compensation” OR “Work ability” OR “Work capacity” OR “Work disability” OR “Work inability” OR “Work incapacity” OR “sickness absenteeism” OR “occupational disabilities” OR “insurance disability” Search modes - Find all my search terms Interface Limiters - Published Date: 20021101-20141231          Search modes - Find all my search terms Interface - EBSCOhost Research Databases          Search Screen - Advanced Search          Database - CINAHL Plus</p>	5822 hits
#2	<p>DE "SICK LEAVE" Search modes - Find all my search terms Interface          Search modes - Find all my search terms Interface Limiters - Published Date: 20021101-20141231          Search modes - Find all my search terms Interface - EBSCOhost Research Databases          Search Screen - Advanced Search          Database - CINAHL Plus</p>	2928 hits
#3	<p>DE "WORK CAPACITY EVALUATION" OR DE "WORKLOAD" Search modes - Find all my search terms Interface          Search modes - Find all my search terms Interface Limiters - Published Date: 20021101-20141231          Search modes - Find all my search terms Interface - EBSCOhost Research Databases          Search Screen - Advanced Search          Database - CINAHL Plus</p>	9124 hits
#4	<p>#1 OR #2 OR #3 Search modes - Find all my search terms Interface          Search modes - Find all my search terms Interface Limiters - Published Date: 20021101-20141231          Search modes - Find all my search terms Interface - EBSCOhost Research Databases          Search Screen - Advanced Search          Database - CINAHL Plus</p>	14154 hits
#5	<p>Adhd OR alcoholism OR anxiety OR “anxiety disorder” OR “appetite disorders” OR “behavior disorders” OR “bipolar disorders” OR burnout OR “chronic disease” OR “cognitive defect” OR dementia OR depression OR disability OR “distress syndrome” OR “drug dependence” OR</p>	360791 hits

	<p>“eating disorders” OR fatigue OR headache OR insomnia OR “major depression” OR “mental disease” OR “mental health issues” OR “mental health problems” OR “mood disorder” OR “posttraumatic stress disorder” OR “psychological disorders” OR “psychological factors” OR psychosis OR schizophrenia OR “sleep disorder” OR stress OR “stress-related mental disorders” OR “substance abuse” OR autism OR migraine</p> <p>Search modes - Find all my search terms Interface Limiters - Published Date: 20021101-20141231</p> <p>Search modes - Find all my search terms Interface - EBSCOhost Research Databases</p> <p>Search Screen - Advanced Search</p> <p>Database - CINAHL Plus</p>	
#6	<p>DE "Attention Deficit Disorder with Hyperactivity" OR DE "Alcoholism" AND DE "Anxiety" OR DE "Anxiety Disorders" OR DE "Eating Disorders" OR DE "Behavior Disorders "OR DE "Bipolar Disorder" OR DE "Occupational Stress" OR DE "Chronic Mental Illness" OR DE "Cognitive Impairment" OR DE "Dementia" OR DE "Depression Emotion" OR DE "Learning Disorders" OR DE "Intellectual Development Disorder" OR DE "Cognitive Impairment" Search modes - Find all my search terms Interface Limiters - Published Date: 20021101-20141231</p> <p>Search modes - Find all my search terms Interface - EBSCOhost Research Databases</p> <p>Search Screen - Advanced Search</p> <p>Database - CINAHL Plus</p>	58135 hits
#7	<p>DE "Distress" OR DE "Drug Dependency" OR DE "Eating Disorders" OR DE "Fatigue" OR DE "Headache" OR DE "Insomnia" OR DE "Major Depression" OR DE "Mental Disorders" OR DE "Migraine Headache" OR DE "Affective Disorders" OR DE "Posttraumatic Stress Disorder" Search modes - Find all my search terms Interface Limiters - Published Date: 20021101-20141231</p> <p>Search modes - Find all my search terms Interface - EBSCOhost Research Databases</p> <p>Search Screen - Advanced Search</p> <p>Database - CINAHL Plus</p>	43182 hits
#8	<p>DE "Psychosis" OR DE "Schizophrenia" OR DE "Sleep Disorders" OR DE "Sleep Disorders" OR DE "Stress" OR DE "Acute Stress Disorder" OR DE "Chronic Stress" OR DE "Drug Abuse" OR DE "Autism" Limit 20021101-20141231 Search modes - Find all my search terms Interface Limiters - Published Date: 20021101-20141231</p> <p>Search modes - Find all my search terms Interface - EBSCOhost Research Databases</p> <p>Search Screen - Advanced Search</p> <p>Database - CINAHL Plus</p>	24695 hits

#9	#5 OR #6 OR #7 OR #8 Search modes - " Limit 20021101-20141231 Search modes - Find all my search terms Interface Limiters - Published Date: 20021101-20141231 Search modes - Find all my search terms Interface - EBSCOhost Research Databases Search Screen - Advanced Search	500123 hits
#10	#9 AND #4 Limit 20021101-20141231 Search modes - Find all my search terms Interface Limiters - Published Date: 20021101-20141231 Search modes - Find all my search terms Interface - EBSCOhost Research Databases Search Screen - Advanced Search Database - CINAHL Plus	5323hits
#11	#9 AND "systematic reviews OR "systematic review" Search modes - Find all my search terms Interface Limiters - Published Date: 20021101-20141231 Search modes - Find all my search terms Interface - EBSCOhost Research Databases Search Screen - Advanced Search Database - CINAHL Plus	78 hits
#12	#9 AND "meta-analysis" Search modes - Find all my search terms Interface Limiters - Published Date: 20021101-20141231 Search modes - Find all my search terms Interface - EBSCOhost Research Databases Search Screen - Advanced Search Database - CINAHL Plus	27 hits
#13	#9 AND "randomized controlled" OR rct OR "randomised controlled" OR "randomized, controlled" OR "randomised, controlled" Search modes - Find all my search terms InterfaceLimiters - Published Date: 20021101-20141231 Search modes - Find all my search terms Interface - EBSCOhost Research Databases Search Screen - Advanced Search Database - CINAHL Plus	143 hits



6. Database: Web of Science Core Collection/MSD/ Meta-analysis/Systematic Reviews/RCTMD/ Meta-analysis/Systematic Reviews/RCT/Cancer/Systematic Reviews/Meta-analysis/RCT

Date: 2014-06-24

#1	<p><b>TOPIC:</b> "Return to Work" OR "Work Capacity Evaluation" OR "Workload" OR "Workplace" OR "Job Satisfaction" OR "Work Capacity Evaluation" OR "Disability Evaluation" OR "Sick Leave" OR "Insurance, Disability" OR "Disability pension" OR "Long term sick leave" OR "Long-term sickness absence" OR "Long-term sickness absentees" OR "Medical leave" OR "Occupational disability" OR "Sick-leave" OR "Sick-listed" OR "Sick leave more than 14 days/ two weeks" OR "Sick-listed employees" OR "Sickness absence" OR "Sickness absent" OR (Sickness AND absentee) OR "Sickness certification" OR "Sickness compensation" OR "Work ability" OR "Work capacity" OR "Work disability" OR "Work inability" OR "Work incapacity" OR "sickness absenteeism" OR "occupational disabilities" OR "insurance disability"</p> <p>Indexes=SCI-EXPANDED, SSCI, A&amp;HCI, CPCI-S, CPCI-SSH Timespan=2002-2014</p>	67921 hits
#2	<p><b>TOPIC:</b> "Musculoskeletal Diseases" OR Arthralgia OR arthritis OR "back pain" OR backache OR "bone injuries" OR "carpal tunnel syndrome" OR "chronic pain" OR epicondylitis OR fibromyalgia OR "knee osteoarthritis" OR "low back pain (LBP)" OR "lower back pain" OR "musculoskeletal diseases" OR "musculoskeletal disorders" OR "musculoskeletal pain" OR "neck pain" OR "osteoarthritis" OR "osteoporosis" OR "rheumatic disease" OR "rheumatoid arthritis" OR "spinal cord injuries" OR "Bone injury" OR "spinal cord injury" OR "spinal cord inflammation" OR "rheumatic diseases"</p> <p>Indexes=SCI-EXPANDED, SSCI, A&amp;HCI, CPCI-S, CPCI-SSH Timespan=2002-2014</p>	276179 hits
#3	<p>#1 AND #2</p> <p>Indexes=SCI-EXPANDED, SSCI, A&amp;HCI, CPCI-S, CPCI-SSH Timespan=2002-2014</p>	4936 hits
#4	<p><b>TOPIC:</b> "meta-analysis"</p> <p>Timespan=2002-2014</p> <p>Indexes=SCI-EXPANDED, SSCI, A&amp;HCI, CPCI-S, CPCI-SSH</p>	64340 hits
#5	<p>#4 AND #3 Timespan=2002-2014</p> <p>Indexes=SCI-EXPANDED, SSCI, A&amp;HCI, CPCI-S, CPCI-SSH</p>	71 hits

#6	<b>TOPIC:</b> "systematic review" or "systematic reviews" Timespan=2002-2014 Indexes=SCI-EXPANDED, SSCI, A&HCI, CPCI-S, CPCI-SSH	61315 hits
#7	#6 AND #3 Timespan=2002-2014 Indexes=SCI-EXPANDED, SSCI, A&HCI, CPCI-S, CPCI-SSH	210 hits
#8	<b>TOPIC:</b> "randomized controlled trials" OR "randomized control trial" OR "randomised controlled trial" OR "randomized clinical trial" OR "randomized trial" Timespan=2002-2014 Indexes=SCI-EXPANDED, SSCI, A&HCI, CPCI-S, CPCI-SSH	141182 hits
#9	#8 AND #3 Timespan=2002-2014 Indexes=SCI-EXPANDED, SSCI, A&HCI, CPCI-S, CPCI-SSH	242 hits
#10	<b>TOPIC:</b> Adhd OR alcoholism OR anxiety OR "anxiety disorder" OR "appetite disorders" OR "behavior disorders" OR "bipolar disorders" OR burnout OR "chronic disease" OR "cognitive defect" OR dementia OR depression OR disability OR "distress syndrome" OR "drug dependence" OR "eating disorders" OR fatigue OR headache OR insomnia OR "major depression" OR "mental disease" OR "mental health issues" OR "mental health problems" OR "mood disorder" OR "posttraumatic stress disorder" OR "psychological disorders" OR "psychological factors" OR psychosis OR schizophrenia OR "sleep disorder" OR stress OR "stress-related mental disorders" OR "substance abuse" OR autism OR migraine OR "Nervous System Diseases" OR Parkinson* Timespan=2002-2014 Indexes=SCI-EXPANDED, SSCI, A&HCI, CPCI-S, CPCI-SSH	1594782 hits
#11	#10 AND #1 Timespan=2002-2014 Indexes=SCI-EXPANDED, SSCI, A&HCI, CPCI-S, CPCI-SSH	16189 hits
#12	#11 AND #4 Timespan=2002-2014 Indexes=SCI-EXPANDED, SSCI, A&HCI, CPCI-S, CPCI-SSH	173 hits
#13	#11 AND #6 Timespan=2002-2014 Indexes=SCI-EXPANDED, SSCI, A&HCI, CPCI-S, CPCI-SSH	255 hits
#14	#11 AND #8 Timespan=2002-2014 Indexes=SCI-EXPANDED, SSCI, A&HCI, CPCI-S, CPCI-SSH	354 hits
#15	<b>TOPIC:</b> "neoplasms" OR "acute leukemia" OR "bladder cancer" OR "bladder tumor" OR "brain cancer" OR "brain tumor" OR "breast cancer" OR "breast neoplasms" OR "breast tumor" OR cancer OR "central nervous system tumor" OR "chronic myeloid leukemia" OR "colon cancer" OR "colonic neoplasms" OR "colorectal cancer" OR "colorectal neoplasms" OR "digestive system cancer" OR "esophagus tumor" OR "esophageal neoplasms" OR "hepatic cancer" OR "intestine cancer" OR "intestinal neoplasms" OR "kidney cancer" OR "kidney neoplasms" OR "leukemia" OR "liver cancer" OR "liver neoplasms" OR "lung cancer" OR "lung carcinoma" OR "lung neoplasms" OR "lymphatic leukemia" OR "lymphoid leukemia" OR lymphoma OR meningioma OR metastasis OR "myeloid leukemia" OR neoplasm OR neoplasms OR "non hodgkin	1341635 hits

	lymphoma" OR "ovary cancer" OR "ovary tumor" OR "ovarian neoplasms" OR "ovarian cancer" OR "pancreas tumor" OR "pancreatic cancer" OR "pancreatic neoplasms" OR "prostate cancer" OR "prostate tumor" OR "prostatic cancer" OR "prostatic neoplasms" OR "stomach cancer" OR "stomach neoplasms" OR "gastric cancer" OR "gastric neoplasms" OR "testis cancer" OR "testis tumor" OR "testicular cancer" OR "testicular neoplasms" OR "thyroid cancer" OR "thyroid neoplasms" OR "uterus cancer" OR "uterus tumor" OR "uterus neoplasms" OR "uterine neoplasms" OR "uterine cancer" Timespan=2002-2014 Indexes=SCI-EXPANDED, SSCI, A&HCI, CPCI-S, CPCI-SSH	
#16	#15 AND #1 Timespan=2002-2014 Indexes=SCI-EXPANDED, SSCI, A&HCI, CPCI-S, CPCI-SSH	2112 hits
#17	#16 AND #6 Timespan=2002-2014 Indexes=SCI-EXPANDED, SSCI, A&HCI, CPCI-S, CPCI-SSH	18 hits
#18	#16 AND #4 Timespan=2002-2014 Indexes=SCI-EXPANDED, SSCI, A&HCI, CPCI-S, CPCI-SSH	41 hits
#19	#16 AND #8 Timespan=2002-2014 Indexes=SCI-EXPANDED, SSCI, A&HCI, CPCI-S, CPCI-SSH	71 hits

7. Database: Scopus/MSD/ Systematic Reviews/Meta-analysis/RCT MD/RCT/Systematic Reviews/Meta-analysis /CANCER /Systematic Reviews/Meta-analysis/RCT  
Date: 2014-06-24

#1	TITLE-ABS-KEY "Return to Work" OR "Work Capacity Evaluation" OR "Workload" OR "Workplace" OR "Job Satisfaction" OR "return to work" OR "Disability Evaluation"	220287 hits
#2	TITLE-ABS-KEY "Musculoskeletal Diseases" OR Arthralgia OR arthritis OR "back pain" OR backache OR "bone injuries" OR "carpal tunnel syndrome" OR "chronic pain" OR epicondylitis OR fibromyalgia OR "knee osteoarthritis" OR "low back pain (LBP)" OR "lower back pain" OR "musculoskeletal diseases" OR "musculoskeletal disorders" OR "musculoskeletal pain" OR "neck pain" OR "osteoarthritis" OR "osteoporosis" OR "rheumatic disease" OR "rheumatoid arthritis" OR "spinal cord injuries" OR "Bone injury" OR "spinal cord injury" OR "spinal cord inflammation" OR "rheumatic diseases"	640903 hits
#3	TITLE-ABS-KEY "Return to Work" OR "Work Capacity Evaluation" OR "Workload" OR "Workplace" OR "Job Satisfaction" OR "return to work" OR "Disability Evaluation" AND PUBYEAR > 2001 AND PUBYEAR < 2015 AND TITLE-ABS-KEY "Musculoskeletal Diseases" OR Arthralgia OR arthritis OR "back pain" OR backache OR "bone injuries" OR "carpal tunnel syndrome" OR "chronic pain" OR epicondylitis OR fibromyalgia OR "knee osteoarthritis" OR "low back pain (LBP)" OR "lower back pain" OR "musculoskeletal diseases" OR "musculoskeletal disorders" OR "musculoskeletal pain" OR "neck pain" OR "osteoarthritis" OR "osteoporosis" OR "rheumatic disease" OR "rheumatoid arthritis" OR "spinal cord injuries" OR "Bone injury" OR "spinal cord injury" OR "spinal cord inflammation" OR "rheumatic diseases" AND PUBYEAR > 2001 AND PUBYEAR < 2015	10230 hits
#4	TITLE-ABS-KEY "Systematic reviews" OR "Systematic review" AND PUBYEAR > 2001 AND PUBYEAR < 2015	97657 hits
#5	TITLE-ABS-KEY "Systematic reviews" OR "Systematic reviews" AND PUBYEAR > 2001 AND PUBYEAR < 2015 AND TITLE-ABS-KEY "Return to Work" OR "Work Capacity Evaluation" OR "Workload" OR "Workplace" OR "Job Satisfaction" OR "return to work" OR "Disability Evaluation" AND PUBYEAR > 2001 AND PUBYEAR < 2015) AND TITLE-ABS-KEY "Musculoskeletal Diseases" OR Arthralgia OR arthritis OR "back pain" OR backache OR "bone injuries" OR "carpal tunnel syndrome" OR "chronic pain" OR epicondylitis OR fibromyalgia OR "knee osteoarthritis" OR "low back pain (LBP)" OR "lower back pain" OR "musculoskeletal diseases" OR "musculoskeletal disorders" OR "musculoskeletal pain" OR "neck pain" OR "osteoarthritis" OR "osteoporosis" OR "rheumatic disease" OR "rheumatoid arthritis" OR "spinal cord injuries" OR "Bone injury" OR "spinal cord injury" OR "spinal	429 hits

	cord inflammation" OR "rheumatic diseases" AND PUBYEAR > 2001 AND PUBYEAR < 2015	
#6	TITLE-ABS-KEY "Meta-analysis" AND PUBYEAR > 2001 AND PUBYEAR < 2015 AND TITLE-ABS-KEY "Return to Work" OR "Work Capacity Evaluation" OR "Workload" OR "Workplace" OR "Job Satisfaction" OR "return to work" OR "Disability Evaluation" AND PUBYEAR > 2001 AND PUBYEAR < 2015 AND TITLE-ABS-KEY "Musculoskeletal Diseases" OR Arthralgia OR arthritis OR "back pain" OR backache OR "bone injuries" OR "carpal tunnel syndrome" OR "chronic pain" OR epicondylitis OR fibromyalgia OR "knee osteoarthritis" OR "low back pain (LBP)" OR "lower back pain" OR "musculoskeletal diseases" OR "musculoskeletal disorders" OR "musculoskeletal pain" OR "neck pain" OR "osteoarthritis" OR "osteoporosis" OR "rheumatic disease" OR "rheumatoid arthritis" OR "spinal cord injuries" OR "Bone injury" OR "spinal cord injury" OR "spinal cord inflammation" OR "rheumatic diseases" AND PUBYEAR > 2001 AND PUBYEAR < 2015	169 hits
#7	TITLE-ABS-KEY "randomised controlled trial*" OR "randomized controlled trials" OR "randomized control trial" OR "randomized" OR "randomised controlled trial" OR "randomized clinical trial" OR "randomized trial" AND PUBYEAR > 2001 AND PUBYEAR < 2015 AND TITLE-ABS-KEY "Return to Work" OR "Work Capacity Evaluation" OR "Workload" OR "Workplace" OR "Job Satisfaction" OR "return to work" OR "Disability Evaluation" AND PUBYEAR > 2001 AND PUBYEAR < 2015 AND TITLE-ABS-KEY "Musculoskeletal Diseases" OR Arthralgia OR arthritis OR "back pain" OR backache OR "bone injuries" OR "carpal tunnel syndrome" OR "chronic pain" OR epicondylitis OR fibromyalgia OR "knee osteoarthritis" OR "low back pain (LBP)" OR "lower back pain" OR "musculoskeletal diseases" OR "musculoskeletal disorders" OR "musculoskeletal pain" OR "neck pain" OR "osteoarthritis" OR "osteoporosis" OR "rheumatic disease" OR "rheumatoid arthritis" OR "spinal cord injuries" OR "Bone injury" OR "spinal cord injury" OR "spinal cord inflammation" OR "rheumatic diseases" AND PUBYEAR > 2001 AND PUBYEAR < 2015	1119 hits
#8	TITLE-ABS-KEY(Adhd OR alcoholism OR anxiety OR "anxiety disorder" OR "appetite disorders" OR "behavior disorders" OR "bipolar disorders" OR burnout OR "chronic disease" OR "cognitive defect" OR dementia OR depression OR disability OR "distress syndrome" OR "drug dependence" OR "eating disorders" OR fatigue OR headache OR insomnia OR "major depression" OR "mental disease" OR "mental health issues" OR "mental health problems" OR "mood disorder" OR "posttraumatic stress disorder" OR "psychological disorders" OR "psychological factors" OR psychosis OR schizophrenia OR "sleep disorder" OR stress OR "stress-related mental disorders" OR "substance abuse" OR autism OR migraine OR "Nervous System Diseases"	3861876 hits

#9	#8 AND #1 AND PUBYEAR > 2001 AND PUBYEAR < 2015	45537 hits
#10	TITLE-ABS-KEY "randomised controlled trial*" OR "randomized controlled trials" OR "randomized control trial" OR "randomized" OR "randomised controlled trial" OR "randomized clinical trial" OR "randomized trial" " AND PUBYEAR > 2001 AND PUBYEAR < 2015 AND TITLE-ABS-KEY "Return to Work" OR "Work Capacity Evaluation" OR "Workload" OR "Workplace" OR "Job Satisfaction" OR "return to work" OR "Disability Evaluation" AND PUBYEAR > 2001 AND PUBYEAR < 2015 AND TITLE-ABS-KEY Adhd OR alcoholism OR anxiety OR "anxiety disorder" OR "appetite disorders" OR "behavior disorders" OR "bipolar disorders" OR burnout OR "chronic disease" OR "cognitive defect" OR dementia OR depression OR disability OR "distress syndrome" OR "drug dependence" OR "eating disorders" OR fatigue OR headache OR insomnia OR "major depression" OR "mental disease" OR "mental health issues" OR "mental health problems" OR "mood disorder" OR "posttraumatic stress disorder" OR "psychological disorders" OR "psychological factors" OR psychosis OR schizophrenia OR "sleep disorder" OR stress OR "stress-related mental disorders" OR "substance abuse" OR autism OR migraine OR "Nervous System Diseases" AND PUBYEAR > 2001 AND PUBYEAR < 2015	2454 hits
#11	TITLE-ABS-KEY "systematic reviews" OR "systematic review" AND PUBYEAR > 2001 AND PUBYEAR < 2015 AND TITLE-ABS-KEY "Return to Work" OR "Work Capacity Evaluation" OR "Workload" OR "Workplace" OR "Job Satisfaction" OR "return to work" OR "Disability Evaluation" AND PUBYEAR > 2001 AND PUBYEAR < 2015) AND TITLE-ABS-KEY Adhd OR alcoholism OR anxiety OR "anxiety disorder" OR "appetite disorders" OR "behavior disorders" OR "bipolar disorders" OR burnout OR "chronic disease" OR "cognitive defect" OR dementia OR depression OR disability OR "distress syndrome" OR "drug dependence" OR "eating disorders" OR fatigue OR headache OR insomnia OR "major depression" OR "mental disease" OR "mental health issues" OR "mental health problems" OR "mood disorder" OR "posttraumatic stress disorder" OR "psychological disorders" OR "psychological factors" OR psychosis OR schizophrenia OR "sleep disorder" OR stress OR "stress-related mental disorders" OR "substance abuse" OR autism OR migraine OR "Nervous System Diseases" AND PUBYEAR > 2001 AND PUBYEAR < 2015	833 hits
#12	TITLE-ABS-KEY " meta-analysis" AND PUBYEAR > 2001 AND PUBYEAR < 2015 AND TITLE-ABS-KEY "Return to Work" OR "Work Capacity Evaluation" OR "Workload" OR "Workplace" OR "Job Satisfaction" OR "return to work" OR "Disability Evaluation" AND PUBYEAR > 2001 AND PUBYEAR < 2015 AND TITLE-ABS-KEY Adhd OR alcoholism OR anxiety OR "anxiety disorder" OR "appetite disorders" OR "behavior disorders" OR "bipolar disorders" OR burnout OR "chronic disease" OR "cognitive defect" OR dementia OR depression OR	371 hits

	disability OR "distress syndrome" OR "drug dependence" OR "eating disorders" OR fatigue OR headache OR insomnia OR "major depression" OR "mental disease" OR "mental health issues" OR "mental health problems" OR "mood disorder" OR "posttraumatic stress disorder" OR "psychological disorders" OR "psychological factors" OR psychosis OR schizophrenia OR "sleep disorder" OR stress OR "stress-related mental disorders" OR "substance abuse" OR autism OR migraine OR "Nervous System Diseases" AND PUBYEAR > 2001 AND PUBYEAR < 2015	
#13	TITLE-ABS-KEY"neoplasms" OR "acute leukemia" OR "bladder cancer" OR "bladder tumor" OR "brain cancer" OR "brain tumor" OR "breast cancer" OR "breast neoplasms" OR "breast tumor" OR cancer OR "central nervous system tumor" OR "chronic myeloid leukemia" OR "colon cancer" OR "colonic neoplasms" OR "colorectal cancer" OR "colorectal neoplasms" OR "digestive system cancer" OR "esophagus tumor" OR "esophageal neoplasms" OR "hepatic cancer" OR "intestine cancer" OR "intestinal neoplasms" OR "kidney cancer" OR "kidney neoplasms" OR "leukemia" OR "liver cancer" OR "liver neoplasms" OR "lung cancer" OR "lung carcinoma" OR "lung neoplasms" OR "lymphatic leukemia" OR "lymphoid leukemia" OR lymphoma OR meningioma OR metastasis OR "myeloid leukemia" OR neoplasm OR neoplasms OR "nonhodgkin lymphoma" OR "ovary cancer" OR "ovary tumor" OR "ovarian neoplasms" OR "ovarian cancer" OR "pancreas tumor" OR "pancreatic cancer" OR "pancreatic neoplasms" OR "prostate cancer" OR "prostate tumor" OR "prostatic cancer" OR "prostatic neoplasms" OR "stomach cancer" OR "stomach neoplasms" OR "gastric cancer" OR "gastric neoplasms" OR "testis cancer" OR "testis tumor" OR "testicular cancer" OR "testicular neoplasms" OR "thyroid cancer" OR "thyroid neoplasms" OR "uterus cancer" OR "uterus tumor" OR "uterus neoplasms" OR "uterine neoplasms" OR "uterine cancer"	3271508
#14	#13 AND #1 AND PUBYEAR > 2001 AND PUBYEAR < 2015	4240 hits
#15	History Search Terms TITLE-ABS-KEY" systematic reviews" OR "systematic review" AND PUBYEAR > 2001 AND PUBYEAR < 2015 AND TITLE-ABS-KEY "Return to Work" OR "Work Capacity Evaluation" OR "Workload" OR "Workplace" OR "Job Satisfaction" OR "return to work" OR "Disability Evaluation" AND PUBYEAR > 2001 AND PUBYEAR < 2015 AND TITLE-ABS-KEY "neoplasms" OR "acute leukemia" OR "bladder cancer" OR "bladder tumor" OR "brain cancer" OR "brain tumor" OR "breast cancer" OR "breast neoplasms" OR "breast tumor" OR cancer OR "central nervous system tumor" OR "chronic myeloid leukemia" OR "colon cancer" OR "colonic neoplasms" OR "colorectal cancer" OR "colorectal neoplasms" OR "digestive system cancer" OR "esophagus tumor" OR "esophageal neoplasms" OR "hepatic cancer" OR "intestine cancer" OR "intestinal neoplasms" OR "kidney cancer" OR "kidney neoplasms" OR "leukemia" OR "liver cancer" OR "liver neoplasms" OR "lung cancer" OR "lung carcinoma" OR "lung	84 hits

	neoplasms" OR "lymphatic leukemia" OR "lymphoid leukemia" OR lymphoma OR meningioma OR metastasis OR "myeloid leukemia" OR neoplasm OR neoplasms OR "nonhodgkin lymphoma" OR "ovary cancer" OR "ovary tumor" OR "ovarian neoplasms" OR "ovarian cancer" OR "pancreas tumor" OR "pancreatic cancer" OR "pancreatic neoplasms" OR "prostate cancer" OR "prostate tumor" OR "prostatic cancer" OR "prostatic neoplasms" OR "stomach cancer" OR "stomach neoplasms" OR "gastric cancer" OR "gastric neoplasms" OR "testis cancer" OR "testis tumor" OR "testicular cancer" OR "testicular neoplasms" OR "thyroid cancer" OR "thyroid neoplasms" OR "uterus cancer" OR "uterus tumor" OR "uterus neoplasms" OR "uterine neoplasms" OR "uterine cancer" AND PUBYEAR > 2001 AND PUBYEAR < 2015	
#16	History Search Terms TITLE-ABS-KEY "meta-analysis" AND PUBYEAR > 2001 AND PUBYEAR < 2015 AND TITLE-ABS-KEY "Return to Work" OR "Work Capacity Evaluation" OR "Workload" OR "Workplace" OR "Job Satisfaction" OR "return to work" OR "Disability Evaluation" AND PUBYEAR > 2001 AND PUBYEAR < 2015 AND TITLE-ABS-KEY "neoplasms" OR "acute leukemia" OR "bladder cancer" OR "bladder tumor" OR "brain cancer" OR "brain tumor" OR "breast cancer" OR "breast neoplasms" OR "breast tumor" OR cancer OR "central nervous system tumor" OR "chronic myeloid leukemia" OR "colon cancer" OR "colonic neoplasms" OR "colorectal cancer" OR "colorectal neoplasms" OR "digestive system cancer" OR "esophagus tumor" OR "esophageal neoplasms" OR "hepatic cancer" OR "intestine cancer" OR "intestinal neoplasms" OR "kidney cancer" OR "kidney neoplasms" OR "leukemia" OR "liver cancer" OR "liver neoplasms" OR "lung cancer" OR "lung carcinoma" OR "lung neoplasms" OR "lymphatic leukemia" OR "lymphoid leukemia" OR lymphoma OR meningioma OR metastasis OR "myeloid leukemia" OR neoplasm OR neoplasms OR "nonhodgkin lymphoma" OR "ovary cancer" OR "ovary tumor" OR "ovarian neoplasms" OR "ovarian cancer" OR "pancreas tumor" OR "pancreatic cancer" OR "pancreatic neoplasms" OR "prostate cancer" OR "prostate tumor" OR "prostatic cancer" OR "prostatic neoplasms" OR "stomach cancer" OR "stomach neoplasms" OR "gastric cancer" OR "gastric neoplasms" OR "testis cancer" OR "testis tumor" OR "testicular cancer" OR "testicular neoplasms" OR "thyroid cancer" OR "thyroid neoplasms" OR "uterus cancer" OR "uterus tumor" OR "uterus neoplasms" OR "uterine neoplasms" OR "uterine cancer" AND PUBYEAR > 2001 AND PUBYEAR < 2015	58 hits
#17	History Search Terms TITLE-ABS-KEY "randomised controlled trial*" OR "randomized controlled trials" OR "randomized control trial" OR "randomized" OR "randomised controlled trial" OR "randomized clinical trial" OR "randomized trial" "AND PUBYEAR > 2001 AND PUBYEAR < 2015 AND TITLE-ABS-KEY "Return to Work" OR "Work Capacity Evaluation" OR "Workload" OR "Workplace" OR "Job Satisfaction" OR	193 hits



	<p>"return to work" OR "Disability Evaluation" AND PUBYEAR &gt; 2001 AND PUBYEAR &lt; 2015 AND TITLE-ABS-KEY "neoplasms" OR "acute leukemia" OR "bladder cancer" OR "bladder tumor" OR "brain cancer" OR "brain tumor" OR "breast cancer" OR "breast neoplasms" OR "breast tumor" OR cancer OR "central nervous system tumor" OR "chronic myeloid leukemia" OR "colon cancer" OR "colonic neoplasms" OR "colorectal cancer" OR "colorectal neoplasms" OR "digestive system cancer" OR "esophagus tumor" OR "esophageal neoplasms" OR "hepatic cancer" OR "intestine cancer" OR "intestinal neoplasms" OR "kidney cancer" OR "kidney neoplasms" OR "leukemia" OR "liver cancer" OR "liver neoplasms" OR "lung cancer" OR "lung carcinoma" OR "lung neoplasms" OR "lymphatic leukemia" OR "lymphoid leukemia" OR lymphoma OR meningioma OR metastasis OR "myeloid leukemia" OR neoplasm OR neoplasms OR "nonhodgkin lymphoma" OR "ovary cancer" OR "ovary tumor" OR "ovarian neoplasms" OR "ovarian cancer" OR "pancreas tumor" OR "pancreatic cancer" OR "pancreatic neoplasms" OR "prostate cancer" OR "prostate tumor" OR "prostatic cancer" OR "prostatic neoplasms" OR "stomach cancer" OR "stomach neoplasms" OR "gastric cancer" OR "gastric neoplasms" OR "testis cancer" OR "testis tumor" OR "testicular cancer" OR "testicular neoplasms" OR "thyroid cancer" OR "thyroid neoplasms" OR "uterus cancer" OR "uterus tumor" OR "uterus neoplasms" OR "uterine neoplasms" OR "uterine cancer" AND PUBYEAR &gt; 2001 AND PUBYEAR &lt; 2015</p>	
--	---	--

8. Database: Cochrane Library/MSD/ Systematic reviews/Meta-analysis/RCT/Cancer/  
 Systematic Reviews/ Meta-analysis/RCT/ MD/ Systematic Reviews/ Meta-analysis/RCT  
 Date: 2014-06-24

#1	MeSH descriptor: Return to Work explode all trees	39 hits
#2	MeSH descriptor: Work Capacity Evaluation explode all trees	184 hits
#3	MeSH descriptor: Workload explode all trees	320 hits
#4	MeSH descriptor: Workplace explode all trees	502 hits
#5	MeSH descriptor: Job Satisfaction explode all trees	172 hits
#6	MeSH descriptor: Disability Evaluation explode all trees	2431 hits
#7	MeSH descriptor: Sick Leave explode all trees	419 hits
#8	MeSH descriptor: Insurance, Disability explode all trees	77 hits
#9	#1 OR #2 OR #3 OR #4 OR #5 OR #6 OR #7 OR #8 OR #9	3613 hits
#10	return to work" or "Work Capacity Evaluation" or "Workload" or "Workplace" or "Job Satisfaction" or "Disability Evaluation" or "sick leave" or "Insurance, Disability" or "Return to Work" or "Disability pension" or "Long term sick leave" or "Long-term sickness absence" or "Long-term sickness absentees" or "Medical leave" or "Occupational disability" or "Sick leave more than 14 days/ two weeks" or "Sick-leave" or "Sick-listed employees" or "Sickness absence" or "Sickness absent" or "Sickness absentee" or "Sickness certification" or "Sickness compensation" or "Work ability" or "Work capacity" or "Work disability" or "Work inability" or "Work incapacity" or "sickness absenteeism" or "occupational disabilities" or "insurance disability"	8208 hits
#11	#10 OR #9	8690 hits
#12	MeSH descriptor: Musculoskeletal Diseases explode all trees	22971 hits
#13	"Musculoskeletal Diseases" or Arthralgia or arthritis or "back pain" or backache or "bone injuries" or "carpal tunnel syndrome" or "chronic pain" or epicondylitis or fibromyalgia or "knee osteoarthritis" or "low back pain (LBP)" or "lower back pain" or "musculoskeletal diseases" or "musculoskeletal disorders" or "musculoskeletal pain" or "neck pain" or "osteoarthritis" or "osteoporosis" or "rheumatic disease" or "rheumatoid arthritis" or "spinal cord injuries" or "Bone injury" or "spinal cord injury" or "spinal cord inflammation" or "rheumatic diseases"	34810 hits

#14	#13 or #12	43424 hits
#15	#11 and #14	2265 hits
#16	#15 and "systematic review*" AND Online Publication Date from Nov 2002 to Dec 2014	294 hits
#17	#15 AND "meta-analysis" AND Online Publication Date from Nov 2002 to Dec 2014	258 hits
#18	#15 and "randomi*ed controlled trial*" AND Online Publication Date from Nov 2002 to Dec 2014	288 hits
#19	"neoplasms" or "acute leukemia" or "bladder cancer" or "bladder tumor" or "brain cancer" or "brain tumor" or "breast cancer" or "breast neoplasms" or "breast tumor" or cancer or "central nervous system tumor" or "chronic myeloid leukemia" or "colon cancer" or "colonic neoplasms" or "colorectal cancer" or "colorectal neoplasms" or "digestive system cancer" or "esophagus tumor" or "esophageal neoplasms" or "hepatic cancer" or "intestine cancer" or "intestinal neoplasms" or "kidney cancer" or "kidney neoplasms" or "leukemia" or "liver cancer" or "liver neoplasms" or "lung cancer" or "lung carcinoma" or "lung neoplasms" or "lymphatic leukemia" or "lymphoid leukemia" or lymphoma or meningioma or metastasis or "myeloid leukemia" or neoplasm or neoplasms or "nonhodgkin lymphoma" or "ovary cancer" or "ovary tumor" or "ovarian neoplasms" or "ovarian cancer" or "pancreas tumor" or "pancreatic cancer" or "pancreatic neoplasms" or "prostate cancer" or "prostate tumor" or "prostatic cancer" or "prostatic neoplasms" or "stomach cancer" or "stomach neoplasms" or "gastric cancer" or "gastric neoplasms" or "testis cancer" or "testis tumor" or "testicular cancer" or "testicular neoplasms" or "thyroid cancer" or "thyroid neoplasms" or "uterus cancer" or "uterus tumor" or "uterus neoplasms" or "uterine neoplasms" or "uterine cancer"	90448 hits
#20	MeSH descriptor: Neoplasms explode all trees	51865 hits
#21	#19 OR #20	92855 hits
#22	#21 AND #11	583 hits
#23	"Systematic review*"AND #22 AND Online Publication Date from Nov 2002 to Dec 2014	294 hits
#24	#22 AND "meta-analysis" AND Online Publication Date from Nov 2002 to Dec 2014	276 hits
#25	"randomi*ed controlled trial*" AND #22 AND Online Publication Date from Nov 2002 to Dec 2014	294 hits
#26	Adhd or alcoholism or anxiety or "anxiety disorder" or "appetite disorders" or "behavior disorders" or "bipolar disorders" or burnout or "chronic	136087 hits

	disease" or "cognitive defect" or dementia or depression or disability or "distress syndrome" or "drug dependence" or "eating disorders" or fatigue or headache or insomnia or "major depression" or "mental disease" or "mental health issues" or "mental health problems" or "mood disorder" or "posttraumatic stress disorder" or "psychological disorders" or "psychological factors" or psychosis or schizophrenia or "sleep disorder" or stress or "stress-related mental disorders" or "substance abuse" or autism or migraine or "Nervous System Diseases"	
#27	MeSH descriptor: Nervous System Diseases explode all trees	63066 hits
#28	#26 or #27	175974 hits
#29	#28 and #11	4955 hits
#30	"Systematic review*" AND #29 AND Online Publication Date from Nov 2002 to Dec 2014	633 hits
#31	"Meta –analysis" AND #29 AND Online Publication Date from Nov 2002 to Dec 2014	564hits
#32	"randomi*ed controlled trial*" AND #29 Online Publication Date from Nov 2002 to Dec 2014	572hits

### Search strategies

#### Prognosfaktorer för (eller emot) en längre sjukskrivning/förtidspension för personer som sjukskrivs

3. Database: Embase /Prognosfaktorer/Systematic Reviews/Meta-analysis/RCT

Date: 2014-08-15

Search	Query	Results
#1	'medical leave'/exp OR 'medical leave' OR 'sick leave' OR 'sick-listed employees' OR 'sick-listed employee' OR 'sickness absence'/exp OR 'sickness absence' OR 'sickness absent' OR 'sickness absentee' OR 'sickness absentees' OR 'sickness absenteeism'	17637 hits
#2	'disability pension' OR 'early retirement' OR 'long term sick leave' OR 'long term sickness' OR 'long term sick' OR 'long term'	745352 hits
#3	#1 AND #2	1973 hits
#4	'prognosis'/exp OR prognos* OR factors OR 'predictive factors' OR predictor* OR prediction	2631506 hits
#5	#3 AND #4	719 hits
#6	'work retention' OR 'return to work'/exp OR 'return to work' OR rtw OR 'work return'	7844 hits
#7	#5 NOT #6	557 hits
#8	#7 AND [1-11-2002]/sd	453 hits
#9	limit to systematic reviews and meta analyses	5 hits
#10	limit to RCT	20 hits
#11	'prospective study'/exp OR 'observational study'/exp OR 'retrospective study'/exp OR 'register'/exp OR prospective OR observational OR register OR registry OR registries OR retrospective OR cohort	1529605 hits
#12	#8 AND #11	227 hits
#13	#12 NOT (#10 OR #9)	216 hits
#14	#8 limit to controlled clinical trial	26 hits
#15	#14 NOT (#10 OR #12)	2 hits

## Search strategies

### Prognosfaktorer för (eller emot) en längre sjukskrivning/förtidspension för personer som sjukskrivs

4. Database: PubMed/Prognosfaktorer/Systematic Reviews/Meta-analysis/RCT

Date: 2014-08-15

Search	Query	Results
#1	"sick leave"[MeSH] OR "sick leave" OR "medical leave" OR "sick-listed employees" OR "sick-listed employee" OR "sickness absence" OR "sickness absent" OR "sickness absentee" OR "sickness absentees" OR "sickness absenteeism"	6859 hits
#2	"disability pension" OR "early retirement" OR "long term sick leave" OR "long term sickness" OR "long term sick" OR "long term"	550114 hits
#3	#1 AND #2	1290 hits
#4	"prognosis"[MeSH] OR prognos* OR factors OR "predictive factors" OR predictor* OR prediction	4287296 hits
#5	#3 AND #4	839 hits
#6	"return to Work"[Mesh] OR "return to work" OR "work return" OR "work retention" OR rtw	6337 hits
#7	#5 NOT #6	661 hits
#8	limit to publication date from 2002-11-01	532 hits
#9	limit to systematic reviews and meta analyses	26 hits
#10	limit to RCT	50 hits
#11	("Prospective Studies"[Mesh]) OR ( "Observational Study" [Publication Type] OR "Observational Study as Topic"[Mesh] ) OR "Retrospective Studies"[Mesh] OR "Registries"[Mesh] OR "Cohort Studies"[Mesh] OR prospective OR observational OR register OR registry OR registries OR retrospective OR cohort	1773442 hits
#12	#8 AND #11	337 hits
#13	#12 NOT (#10 OR #9)	299 hits
#14	#8 limit to article type controlled clinical trial	3 hits
#15	#14 NOT #10	3 hits

## Search strategies

### Prognosfaktorer för (eller emot) en längre sjukskrivning/förtidspension för personer som sjukskrivs

5. Database: PsycInfo/Prognosfaktorer/Systematic Reviews/Meta-analysis/RCT

Date: 2014-08-15

Search	Query	Results
#1	("medical leave" OR "sick leave" OR "sick-listed employees" OR "sick-listed employee" OR "sickness absence" OR "sickness absent" OR "sickness absentee" OR "sickness absentees" OR "sickness absenteeism" ) OR DE "employee leave benefit" OR DE "employee leave benefit"	1889 hits
#2	"disability pension" OR "early retirement" OR "long term sick leave" OR "long term sickness" OR "long term sick" OR "long term", limit to publication date from 2002-11-01	57593 hits
#3	#1 AND #2	386 hits
#4	prognos* OR factors OR "predictive factors" OR predictor* OR prediction OR DE "prognosis"	692367 hits
#5	#3 AND #4	211 hits
#6	DE "reemployment" OR "return to work" OR "work return" OR "work retention" OR rtw	2046 hits
#7	#5 NOT #6	157 hits
#8	limit to systematic reviews and meta analyses	3 hits
#9	#7 AND ("randomized controlled" OR "randomised controlled" OR "randomized, controlled" OR "randomised, controlled" )	3 hits
#10	#7 limit to prospective study, retrospective study	50 hits
#11	#7 AND ("controlled clinical trial" OR "controlled trial" OR "controlled, clinical trial" )	2 hits

### After deduplication

systematic reviews and meta analyses	30 hits
RCT	57 hits
Prospective studies, observational, retrospective, cohort (deduplicerat mot RCT:ar och systematic reviews)	371 hits
Controlled clinical trials	4 hits

## Search strategies

### Prognosfaktorer för (eller emot) att sjukskrivna arbetstagare kan återgå tidigare till arbetet

1. Database: Embase/Prognosfaktorer/Systematic Reviews/Meta-analysis/RCT

Date: 2014-08-14

Search	Query	Results
#1	'medical leave'/exp OR 'medical leave' OR 'sick leave' OR 'sick-listed employees' OR 'sick-listed employee' OR 'sickness absence'/exp OR 'sickness absence' OR 'sickness absent' OR 'sickness absentee' OR 'sickness absentees' OR 'sickness absenteeism'	17630 hits
#2	'work retention' OR 'return to work'/exp OR 'return to work' OR rtw OR 'work return'	7837 hits
#3	#1 AND #2	1097 hits
#4	'prognosis'/exp OR prognos* OR factors OR 'predictive factors' OR predictor* OR prediction	2628830 hits
#5	#3 AND #4	476 hits
#6	#5 AND [1-11-2002]/sd	371 hits
#7	limit to systematic reviews and meta analyses	15 hits
#8	limit to RCT	23 hits
#9	'prospective study'/exp OR 'observational study'/exp OR 'retrospective study'/exp OR 'register'/exp OR prospective OR observational OR register OR registry OR registries OR retrospective OR cohort	1523662 hits
#10	#6 AND #9	161 hits
#11	#10 NOT (#7 OR #8)	148 hits
#12	limit to controlled clinical trial 1 kvar efter deduplicering mot de andra sökningarna.	28 hits



## Search strategies

### Prognosfaktorer för (eller emot) att sjukskrivna arbetstagare kan återgå tidigare till arbetet

2. Database: PubMed/Prognosfaktorer/Systematic Reviews/Meta-analysis/RCT

Date: 2014-08-14

Search	Query	Results
#1	"sick leave"[MeSH] OR "sick leave" OR "medical leave" OR "sick-listed employees" OR "sick-listed employee" OR "sickness absence" OR "sickness absent" OR "sickness absentee" OR "sickness absentees" OR "sickness absenteeism"	6858 hits
#2	"return to Work"[Mesh] OR "return to work" OR "work return" OR "work retention" OR rtw	6335 hits
#3	#1 AND #2	839 hits
#4	"Prognosis"[Mesh] OR prognos* OR factors OR 'predictive factors' OR predictor* OR prediction	4285622
#5	#3 AND #4	555 hits
#6	limit to publication date from 2002-11-01	471 hits
#7	limit to systematic reviews and meta analyses	31 hits
#8	limit to RCT	72 hits
#9	("Prospective Studies"[Mesh]) OR ( "Observational Study" [Publication Type] OR "Observational Study as Topic"[Mesh] ) OR "Retrospective Studies"[Mesh] OR "Registries"[Mesh] OR "Cohort Studies"[Mesh] OR prospective OR observational OR register OR registry OR registries OR retrospective OR cohort)	1772595 hits
#10	#6 AND #9	278 hits
#11	#10 NOT #8	237 hits
#12	#11 NOT #7	228 hits
#13	#12 NOT ("randomized controlled" OR "randomised controlled")	222 hits
#14	#6 limit to article type "controlled clinical trial"  3 kvar efter deduplicering mot de andra sökningarna.	6 hits

## Search strategies

### Prognosfaktorer för (eller emot) att sjukskrivna arbetstagare kan återgå tidigare till arbetet

3. Database: PsycInfo/Prognosfaktorer/Systematic Reviews/Meta-analysis/RCT

Date: 2014-08-14

Search	Query	Results
#1	"medical leave" OR "medical leave" OR "sick leave" OR "sick leave" OR "sick-listed employees" OR "sick-listed employee" OR "sickness absence" OR "sickness absence" OR "sickness absent" OR "sickness absentee" OR "sickness absentees" OR "sickness absenteeism" OR DE "Employee Leave Benefit"	1889 hits
#2	DE "reemployment" OR "return to work" OR "work return" OR "work retention" OR rtw	1710 hits
#3	#1 AND #2	240 hits
#4	DE "Prognosis" OR prognos* OR factors OR "predictive factors" OR predictor* OR prediction	692367 hits
#5	#3 AND #4	127 hits
#6	limit to Published Date: 20021101	113 hits
#7	limit to Methodology: -Systematic Review, -Meta Analysis Men inga nya träffar utöver Embase/PubMed.	2 hits
#8	#6 AND ("randomized controlled" OR rct OR "randomised controlled" OR "randomized, controlled" OR "randomised, controlled")  1 ny träff utöver Embase/PubMed.	3 hits
#9	limit to Methodology: -Retrospective study, -Prospective Study, -followup study 11 nya träffar utöver Embase/PubMed	42 hits
#10	#6 AND ("controlled trial" OR "controlled study")	0 hits

### After deduplication

Systematic reviews and meta analyses	40 hits
RCT	83 hits
Prospective studies, observational, retrospective, cohort	278 hits
Controlled, clinical trials	3 hits

## Search strategies

### Faktorer för att en patient inte åter behöver (eller inte behöver) sjukskrivning för en tidigare diagnos som patientens sjukskrivits för? (sekundärpreventiva faktorer)

4. Database: Embase/Prognosfaktorer/Systematic Reviews/Meta-analysis/RCT

Date: 2014-08-17

Search	Query	Results
#1	'medical leave'/exp OR 'medical leave' OR 'sick leave' OR 'sick-listed employees' OR 'sick-listed employee' OR 'sickness absence'/exp OR 'sickness absence' OR 'sickness absent' OR 'sickness absentee' OR 'sickness absentees' OR 'sickness absenteeism'	17639 hits
#2	'relapse'/exp OR relaps* OR 'recurrence'/exp OR recurrence OR recurr*	771068 hits
#3	#1 AND #2	683 hits
#4	'prognosis'/exp OR prognos* OR factors OR 'predictive factors' OR predictor* OR prediction OR 'prevention'/exp OR prevention OR preventive OR 'secondary prevention'/exp	4501805 hits
#5	#3 AND #4	276 hits
#6	'work retention' OR 'return to work'/exp OR 'return to work' OR rtw OR 'work return'	7845 hits
#7	#5 NOT #6	226 hits
#8	#7 AND [1-11-2002]/sd	161 hits
#9	limit to systematic reviews and meta analyses	5 hits
#10	limit to RCT	14 hits
#11	'prospective study'/exp OR 'observational study'/exp OR 'retrospective study'/exp OR 'register'/exp OR prospective OR observational OR register OR registry OR registries OR retrospective OR cohort	1529698 hits
#12	#8 AND #11	65 hits
#13	#12 NOT (#10 OR #9)	60 hits
#14	#8 limit to controlled clinical trial	17 hits
#15	#14 NOT (#9 OR #10 OR #12)	1 hits

## Search strategies

### Faktorer för att en patient inte åter behöver (eller inte behöver) sjukskrivning för en tidigare diagnos som patientens sjukskrivits för? (sekundärpreventiva faktorer)

5. Database: PubMed/Prognosfaktorer/Systematic Reviews/Meta-analysis/RCT

Date: 2014-08-17

Search	Query	Results
#1	"sick leave"[MeSH] OR "sick leave" OR "medical leave" OR "sick-listed employees" OR "sick-listed employee" OR "sickness absence" OR "sickness absent" OR "sickness absentee" OR "sickness absentees" OR "sickness absenteeism"	6860 hits
#2	"Recurrence"[Mesh] OR relaps* OR recurrence OR recurr*	586 689 hits
#3	#1 AND #2	323 hits
#4	"Prognosis"[Mesh] OR prognos* OR factors OR "predictive factors" OR predictor* OR prediction OR prevention OR preventive OR "secondary prevention"[Mesh]	5238954 hits
#5	#3 AND #4	219 hits
#6	"return to Work"[Mesh] OR "return to work" OR "work return" OR "work retention" OR rtw	6340 hits
#7	#5 NOT #6	161 hits
#8	limit to publication date from 2002-11-01	118 hits
#9	limit to systematic reviews and meta analyses	13 hits
#10	limit to RCT	21 hits
#11	("Prospective Studies"[Mesh]) OR ( "Observational Study" [Publication Type] OR "Observational Study as Topic"[Mesh] ) OR "Retrospective Studies"[Mesh]) OR "Registries"[Mesh]) OR "Cohort Studies"[Mesh]OR prospective OR observational OR register OR registry OR registries OR retrospective OR cohort	1774154 hits
#12	#8 AND #11	64 hits
#13	#12 NOT (#10 OR #9)	51 hits
#14	#8 limit to article type controlled clinical trial	1 hits

## Search strategies

### Faktorer för att en patient inte åter behöver (eller inte behöver) sjukskrivning för en tidigare diagnos som patientens sjukskrivits för? (sekundärpreventiva faktorer)

6. Database: PsycInfo/Prognosfaktorer/Systematic Reviews/Meta-analysis/RCT

Date: 2014-08-17

Search	Query	Results
#1	("medical leave" OR "sick leave" OR "sick-listed employees" OR "sick-listed employee" OR "sickness absence" OR "sickness absent" OR "sickness absentee" OR "sickness absentees" OR "sickness absenteeism" ) OR DE "employee leave benefit" OR DE "employee leave benefit"	1889 hits
#2	DE "Relapse (Disorders)" OR relaps* OR recurrence OR recurr*	42652 hits
#3	#1 AND #2	34 hits
#4	prognos* OR factors OR "predictive factors" OR predictor* OR prediction OR DE "prognosis"	692367 hits
#5	#3 AND #4	14 hits
#6	DE "reemployment" OR "return to work" OR "work return" OR "work retention" OR rtw	2046 hits
#7	#5 NOT #6	10 hits
#8	limit to systematic reviews and meta analyses	0 hits
#9	#7 AND ( "randomized controlled" OR "randomised controlled" OR "randomized, controlled" OR "randomised, controlled" )	1 hits
#10	#7 limit to prospective study, retrospective study	5 hits
#11	#7 AND ("controlled clinical trial" OR "controlled trial" OR "controlled, clinical trial" )	1 hits

### After deduplication

Systematic reviews and meta analyses	17 hits
RCT	27 hits
Prospective studies, observational, retrospective, cohort	89 hits
Controlled, clinical trials	2 hits