

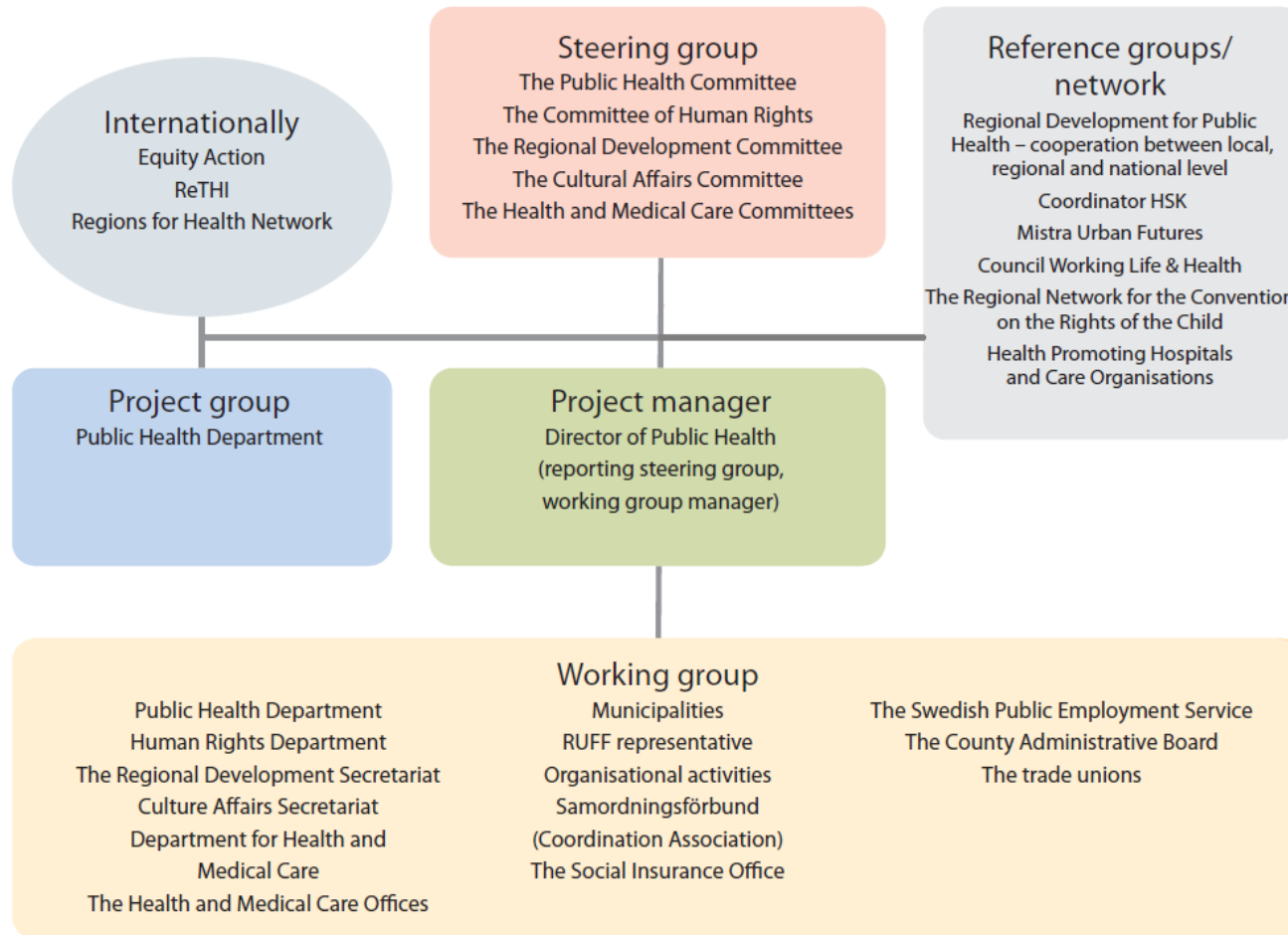
A regional experience on tackling health inequalities – values of the vertical axis

SALAR conference,
Brussels 4 November 2014

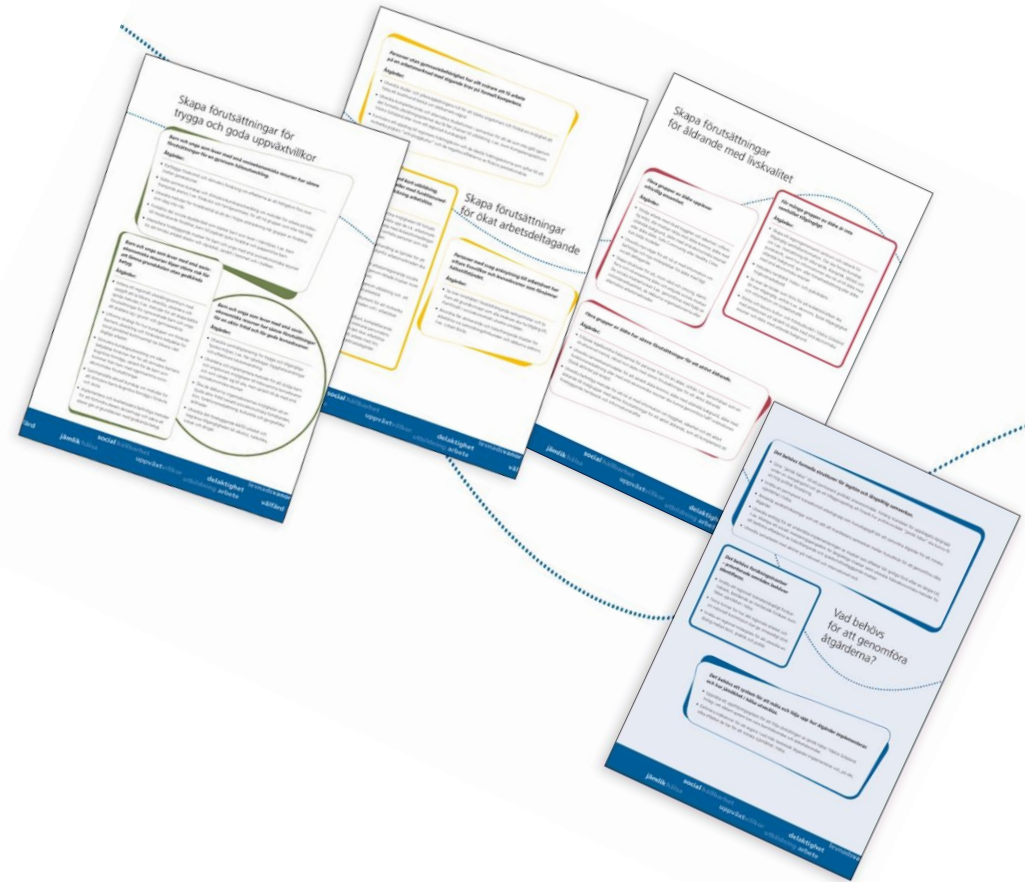
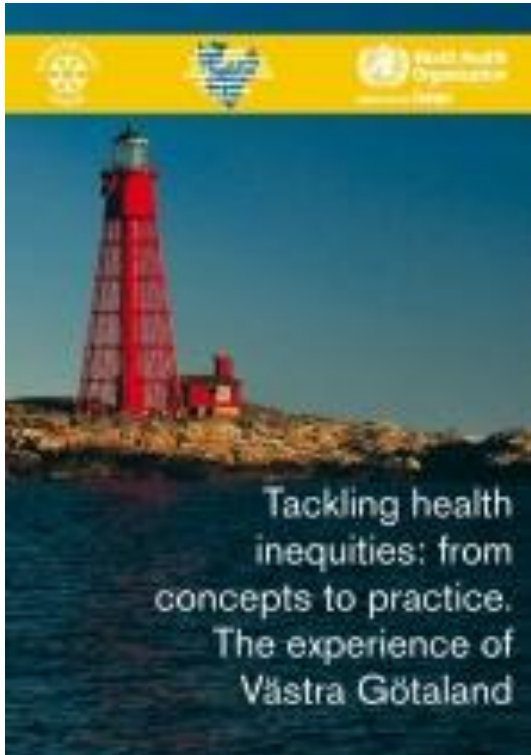
Maria Berhe

Senior Officer Public Health, Region Västra Götaland

The network – whole of government



What are the results?!



How about the vertical axis?

On the + side...

- WHO and Health 2020 sets the tone!
- Funding for expensive undertakings
- Connects regions facing the same challenges – networks, organizations and projects

Still lacking...

- “Whole of government” on EU-level
- Joint system for monitoring and measuring (pragmatic)

Thank you!



health equity
social sustainability
early-life conditions
education employment
participation
living habits
welfare